

**KENT MASONIC LIBRARY AND MUSEUM TRUST**  
**Annual General Meeting held on 17<sup>th</sup> September 2016 at the**  
**Masonic Centre, Canterbury.**

**Members present:**

R.W.Bro. G.Dearing Provincial Grand Master East Kent	V.W.Bro. R Wade
W.Bro. P.Hagger Assistant Provincial Grand Master	W.Bro. P.Rodd Assistant Provincial Grand Master
W.Bro. A.Denne (Chairman)	W.Bro. D.Alexander Provincial Grand Secretary
W.Bro. C.Boxer	W.Bro. A.Eldridge
W.Bro. R.O'Brien	W.Bro. J.H.A.Andrews (Secretary)
W.Bro. J.Flower (Operations Manager)	W.Bro. G.Cuthbert (Facilities Manager)
W.Bro. M.Bassant (Chairman Association of Patrons)	

Together with 61 Lodge Representatives, Patrons, Museum Stewards and their ladies.

The Chairman opened the meeting at 11.00 a.m. welcoming all present and in particular the Provincial Grand Master and members of the Provincial Executive and thanked all for their continued support of the Library & Museum. The Chairman reported the loss of two very fine colleagues, our Curator and Librarian, W.Bro. Tony Periton and our Treasurer W.Bro. David Anning. W.Bro. Tony Periton passed away in the early hours of the morning of Sunday 4<sup>th</sup> September after a long illness bravely and stoically borne. W.Bro. David passed away on 9<sup>th</sup> September in the Kent and Canterbury Hospital after suffering a major stroke. They both made immense contributions and gave excellent service to the museum over many years. Through their knowledge, advice and enthusiasm the museum has prospered and they were responsible for a major part of the improvement and growth of the museum. They were highly respected by all who met them and worked with them in the museum and they will be greatly missed. We send our sincere condolences to their families and our thoughts are with them at this very difficult time. The Chairman asked all present to stand for a few moments in remembrance of two very fine gentlemen.

**Apologies:**

Apologies were received from R.W.Bro. M.Estaugh the Provincial Grand Master of West Kent, W.Bro. R.Waltham Assistant Provincial Grand Master East Kent and 27 Lodge Representatives.

**2. Minutes of the Meeting on 19<sup>th</sup> September 2015.**

The Minutes of the previous meeting having been posted on the Museum's website. W.Bro. C.Manuel of the Lodge of St. Mark No. 6969 proposed and W.Bro. A. Young of the Stella Maris Lodge No. 7297 seconded they should be taken as read and adopted. This was put to the meeting and carried.

**3. Statement by the Chairman.**

Ladies Gentlemen and Brethren following two years of consolidation this has been a year of achievement and progress. It has been a busy year, following my statement last year that it was hoped that during the coming year a change in the charitable status to a Charitable Incorporated Organisation [CIO] and the re-accreditation of the museum would take place. I am pleased to report that both these important matters have been achieved. I would like to thank the Provincial Grand Master and W.Bros William Daniels and Charles Boxer for their assistance and guidance with these successful applications. I am pleased to report that the visitor numbers continue to increase, which is most encouraging. We have welcomed many overseas visitors. We have again received visitors from over 50 countries. This is quite a test for the language skills of our Stewards. During the past year every effort has been made to publicise and raise the profile of the museum. In this respect, co-operation with Canterbury Cathedral, Canterbury Museum Group and other museum groups, Visit Kent, Visit Canterbury and also the media have lead to some excellent articles and publicity for the museum. I am grateful to W.Bro. Robin Evans our marketing manager and trustee W.Bro. Tony Eldridge for their input in achieving success in this area. The Arthur Crick Trust has for many years given great financial support to the museum, we are most grateful to the Trustees of that trust for their generous support in the production of the guide book to the museum. Trustee W.Bro. Roger O'Brien complied and arranged the publication of this excellent guide book, the sales of which continue to make a valuable contribution to the museum finances.

I would urge all Lodges and Chapters to purchase copies to distribute to their members. We are most grateful to W.Bro. Brian Blake, who through his regalia scheme, is now making significant financial contribution to the museum funds. During the year there have been changes to the management team W.Bro. Eddie Baker our former Operations and Facilities Manager retired in April, we have been pleased to welcome two new members of the team W.Bro. Adrian Wagstaff as Assistant Secretary and W.Bro. Graham Cuthbert as Facilities Manager. W.Bro. Adrian is a London and West Kent Mason who as well as his secretarial duties will be promoting the museum in West Kent which he has already successfully begun. W.Bro. Graham, an Ashford Mason, has introduced new practices which have already seen major improvements in the running of the museum. We have, as I have already mentioned, suffered the major loss of two key members of the management team, two members whose contributions have been immense and who will be very hard to replace. I would like to thank W.Bro. John Andrews our secretary, who continues to deal efficiently with the numerous secretarial duties. He has endured a busy twelve months particularly due to the many changes that have taken place. W.Bro. Jim Flower last year took over the most demanding and important role of organising the volunteers. During the past year W.Bro. Jim has increased the number of volunteers and opening hours of the museum. On behalf of the Trustees, I thank you for the many hours you have spent organising the rotas. I would also of course like to thank W.Bro. Nigel Ayling for assisting you with this office. W.Bro. Terry Tanner joined the team as assistant curator last year, and we are grateful to him for stepping in to look after the curator's duties when W.Bro. Tony Periton was unable to be here. We are now in the fifth year of the association of patrons, and I thank W.Bro. Mark Bassant and his team for the stewardship of the association. The Trustees are most grateful to Mrs. Sue Rodgers for organising and running the shop. Sue's enthusiasm has rejuvenated the shop and the results speak for themselves. The Trustees are most grateful to her for taking on and continuing in this important role. On behalf of the Trustees I would also like to thank Mrs. Sarah Blatter our Deputy Curator and W.Bro. Geoff Davis our Assistant Librarian. Our thanks also go to W.Bros. Tony Taylor, David Forester and Mark Wibley for their work on the building and IT systems. We have two stalwarts who attend the library each week who carry out the cataloguing and sorting of the Church Collection and I sincerely thank Mrs. Sue Ransom and Mrs. Sandra Bailey for their diligently working through this enormous task. They have now completed this mammoth project and their support and assistance is much appreciated. Typically as soon as they had completed the Church collection they were asking for their next project, which I am pleased to say they are already working on, cataloguing the Library. I am pleased to report W.Bro. Paddy Langdown, with his usual enthusiasm, is continuing to produce the latest list of lecturers and is currently engaged in organising the Cornwallis Lectures. I now come to the mainstay of the museum, the Volunteers. I would like to thank the many volunteers and stewards who give up their valuable time to help the museum throughout the year. The support they have given to W.Bro. Jim Flower has been excellent. They are truly the backbone of the museum, without their support the museum could not function and would not be open almost every day of the year. I cannot emphasise how much their contribution is appreciated. Of course to ensure the success of the museum we are always in need of more volunteers to assist in keeping the museum open seven days a week which is expected of a museum of this standing. The museum and library is a great asset to both the provinces of East and West Kent. It is very pleasing to note the increase in interest from the members of the West Kent Province during the past year, thanks to the support of R.W.Bro. Mark Estaugh the Provincial Grand Master of West Kent and V.W.Bro. Roland Wade. The Museum is particularly indebted to V.W.Bro. Roland who has for many years been vice-chairman of the management committee and who is stepping down this year. He has been almost solely responsible for maintaining the liaison and links between the West Kent Province and the museum. The Trustees and the Association of Patrons are pleased to announce that V.W.Bro. Roland has been appointed an honorary member of the Association of Patrons. Finally I thank my co-trustees for their support and assistance during the year and for the valuable work they have undertaken in the interest of the museum. The museum is a great asset to East and West Kent Provinces and is of course the envy of other Provinces. It is now recognised as a leading Masonic Museum and has become one of the City of Canterbury's main attractions. The Trustees realise there are challenges ahead, it is our duty to see that it is maintained to a high standard and develops further. Please mention the attributes of the museum to your lodges and friends, encourage visits, encourage Lodge Mentors to bring new members to visit, ensure prospective new members are aware of the museum, encourage membership of the association of patrons. We need one volunteer from each lodge to assist with the manning of the museum.

#### 4. **To Approve the Accounts.**

The Audited Accounts for the year ending 31<sup>st</sup> March 2016 having been distributed [see Appendix A], W.Bro. B.Bulivant of the St. Lawrence Lodge No. 3350 proposed the adoption of the published accounts together with a vote of thanks to the late Treasurer. This was seconded by W.Bro. G.Cuthbert of the Ashford Lodge No. 8945 and approved by the meeting. The financial activity of the trust ceased on 31<sup>st</sup> March 2016 and the accounts submitted were the final accounts.

#### 5. **Reports.**

The operations Manager, W.Bro. J Flower Presented his report.

In order for the museum to be open seven days a week a minimum of 60 volunteer stewards are required, plus 10 key holders, for health and safety reasons there must be two stewards on duty each day. We now have a group of 10 'occasional' volunteers who cover for the regular stewards when they are unable to attend. So that now we have over 80 volunteers, therefore the museum is rarely closed these days. We have unfortunately recently lost a number of regular volunteers due mainly to health problems. I am therefore looking for replacements. If there is anybody who is prepared to give up one day a month to volunteer at the museum, especially if you are a lodge museum and library representative, you will find it very rewarding meeting people from all over the world. If you feel you would be interested please see me. Finally I would like to thank all the volunteers for their time and devotion to the museum and for the assistance they have given me personally over the past few months.

The chairman thanked W.Bro. Flower for the many hours spent organising the day to day running of the museum.

**The Marketing Officer, W.Bro. R.Evans, being unable to be present, W.Bro. Tony Eldridge, the trustee who oversees this important department of the Museum delivered their report.**

Transcript of Marketing Report, prepared jointly by Robin Evans & Tony Eldridge, and presented by Bro Eldridge:



## MARKETING REPORT – 2016 AGM

**GOOD MORNING**

**Ladies, Gentlemen & Brethren, I bring apologies from Robin Evans our Marketing Manager who is at an Installation Meeting in the New Forest today. Once again, we have worked together to produce this Report and as Trustee responsible for Marketing & PR, now present on behalf of us both:**

Our successes in **marketing the Museum** and engaging with our audiences far and wide continue to go from strength to strength as can be seen from the amazing comments in our Visitor Books and the location of the contributors – with curious visitors from the **#four quarters of the globe.**

As in previous years I am sure that others will cover the visitor statistics and the 'mix' in detail – but I am pleased to report that:

- Our **Business Plan** target for visitor numbers is (*or was*) 10,000 by 2020. In Sept 2015-Aug 2016, we have exceeded 9,000 for the first time – and here again our Volunteer Guides and ALL who work regularly in the Museum, have naturally played a major part in this success.

- Our **stand alone Museum Website** has been very successfully launched and enhanced, running for 12 months now almost to the day – since I announced it at the 2015 AGM – **with fabulous visitor statistics**. Year one to yesterday, there have been 5,600+ Sessions, from 4,480+ Users – and Pageviews in excess of 11,700. Pages per session are ‘more than 2’, which means that people generally don't just go to the homepage but search deeper into the site. I and Robin, and our Website professional Bro Warren Muckle, strongly recommend that you visit – and browse at: [kentmuseumoffreemasonry.org.uk](http://kentmuseumoffreemasonry.org.uk)

We continue to reap rewards from our close working relationships with **Visit Canterbury & Visit Kent**. Especially through the City's Tourism team and our sustained participation in the **Kent Big Weekend** each March.

In May, I represented the Museum at the "**Visit Canterbury Partners Conference 2016**" at the Marlowe Theatre. We have an entry in the "Visit Canterbury" free 'glossy' guide – and we are in good company and have good profile in the **HERITAGE ATTRACTIONS** pages. On the day, it became clear that many of the other Partners are aware of our Museum and that they recommend their Visitors to visit us. Various Guest House and Restaurant owners and the "**Canterbury Tales**" visitor attraction (not the pub, although they may as well!) recommend us especially.

There was also representation from "**Visit Kent**" – and particularly good presentations from: Peter Ryder on Marketing Tourism; from our friend James Williams at the Beaney – and from Culture Vultures, Dave Yard (**Gulbenkian Theatre**) & Rachel Pilard. The latter were particularly interested in what I had to say about our Museum.

For all of us who wander around Canterbury – Bob Jones presenting on behalf of the Canterbury "BID" Team (Canterbury-connected Business Improvement District) coordinating and raising the profile of Canterbury businesses, organisations and attractions drew attention to their 'bowler-hat-wearing' guys & girls "**Ambassadors**" who guide Visitors to the various City Attractions.

So as not to show favouritism, they are told to mention just 3 attractions when speaking to Visitors – (no more, no less) – so if WE speak to them and enthuse about the Kent Museum of Freemasonry and what it has to offer (Roger O'Brien - you will be particularly good at this!) – they will automatically mention US to any Visitors who ask them "what's the best thing to do and see today in Canterbury" !

**We are on the map everyone**. Very pleased to have attended this one and to meet so many other people working to make Canterbury the favourite place to visit.

- Our social media presence continues to grow, with our open Facebook page now having in excess of 550 followers across 6 out of 7 continents with whom we regularly engage. Thanks must be extended to **RW Bro. Mark Estaugh, PGM** of West Kent and his team who have actively encouraged our engagement with their Facebook group. If we post anything about **Museum news** on the **East Kent Provincial Facebook** pages – we also post it the **West Kent Provincial Facebook** pages – and **West Kent APGM Paul Flowerday** and others, endorse and share within West Kent further. We have also created an **Instagram** account. The donated banner from the West Kent 'Lodge of Good Heart' has been put up on the end wall of the museum gallery.

- Once again, our much-valued team of **Volunteers and ALL** who regularly work in the Museum day to day are instrumental in promoting our image – and a mention for our fabulous Museum Shop so enthusiastically run by **Sue Rodgers – Robin** has created a specific link with photographs, on the Museum website to highlight what is on offer; gifts; books, items of personal jewellery as well as ties, regalia and cases. Do take a look at this as well Brethren and Ladies.

- A lot of work has been done behind the scenes to update our ‘marketing collateral’ – our signage, our logos, our brochures etc – to reflect the changes required as a result of our new CIO status.

- And then there is the Province’s article in *Freemasonry Today*: Robin Evans, having got the attention of the editor, I was pleased to collaborate with VWBro Roger Odd in working with their journalists & staff photographer on the article “A CANTERBURY TALE” which appeared in the Summer 2016 issue of *Freemasonry Today*. Happily, this became a very inclusive piece as it highlighted not only the PGM’s Tercentenary Cathedral Appeal and our historic and ongoing good relationships with Canterbury Cathedral – but also gave a profile snapshot of the Museum and our Cathedral Stonemasons’ Exhibition.

## BUILDING WITH HISTORY



Tony and Roger stand before the Chapter House East Window, a gift from Kent Freemasons in 1896

For Newton, the stonemasons are the ‘guardians’ of the Cathedral. It’s almost as if the building is a living, breathing thing that holds people’s hopes and beliefs within it. ‘It’s exactly like that, an extraordinary place.’ But like any living thing, it needs support. ‘The weather throws everything at the Cathedral. The south side gets lashed by rain and wind, then hot sun in summer. The north side is attacked by cold.’

Does it cause you pain when you see it start to crumble? ‘It does sometimes, when you see really old little bits of detail just hanging on by a whisker. If something precious is on the brink we take it out and put it in a safe place, replacing it with as accurate a copy as we can. After all, the original will still bear that first stonemason’s marks.’

The most pressing issue is the deterioration of the north-west transept and its pinnacles. One of the oldest parts of the building, dating back to the 11th century, it supports the area of the Martyrdom, the small altar to St Thomas Becket, as well as one of the breathtaking stained-glass windows Freemasons of the past helped provide, dating from 1954.

*‘The Freemasons have been immensely generous. They’ve given proper, practical help.’*

*Heather Newton*

With the Cathedral in need of support, it was a happy coincidence that Roger was considering how best to mark the Freemasons’ Tercentenary. The result is that the Provinces of East and West Kent, Sussex and Surrey have pledged to raise £200,000 by the end of the year to enable restoration work already underway to be completed.

### MASONIC FOUNDATIONS

And so to the Kent Museum of Freemasonry, where you will discover – if you don’t already know – that Freemasonry is thought to have origins in English stonemasons who built the great cathedrals and churches of the Middle Ages.

Tony Eldridge, a museum trustee and volunteer, says visitor numbers have risen notably since its refurbishment in 2012: ‘We’ve had 9,000 visitors in the past 12 months, over 5,000 of those non-masons.’ From the interactive children’s area to the surprising list of masons (including George Washington and ‘Buzz’ Aldrin), the museum opens a door on Freemasonry, particularly through the current exhibition tracing modern – and ancient – bonds with the Cathedral.

A semi-professional singer, Tony often sings at Canterbury Cathedral and knows it well: ‘A Canon, Tom Pritchard, once said to me, “If you think of the prayers that have soaked into the walls, it’s no wonder people feel so uplifted here.”’ Or as Roger says, ‘The more I get involved with the Cathedral, the more I feel, “Aren’t I lucky to be a part of this?”’

Find out more about the Kent Museum of Freemasonry at [www.kentmuseumoffreemasonry.org.uk](http://www.kentmuseumoffreemasonry.org.uk)

- Since our redevelopment we have been delivering a **Lecture** about what the Museum has to offer – to Lodges, Chapters and other Masonic orders. Last year VW Bro Roland Wade introduced two **West Kent Stewards**; WBros Phil Moore and Graham Stanford to expand the team and assist in delivering the talk West of the Medway. To date Phil and Graham, accompanied by our mascot ‘Hiram the Hippo’, have visited five units with dates already confirmed for the new 2016/17 Masonic season. We also thank **W Bro Adrian Wagstaff**, Assistant Secretary of the Museum for his enthusiastic support ‘from the West’ AND **W Bro Paddy Langdown** for keeping the **List of Speakers** up to date.
- The **West Kent tour** has so far raised over **£1,200** through a combination donations and sales of our excellent **Guidebooks**.
- Ladies, Gentleman & Brethren – again under the heading of working with others to celebrate our ‘Masonic Heritage’ – **Diane Clements**, **Director of the London Library & Museum – and exhibition designer Stephen Greenberg of ‘Metaphor’** addressed the Quarterly Communication last Wednesday about the **London L&M 2017 Exhibition: “From concept to reality”**. Their presentation was outstanding. We not only have great relations with the L&M in London – occasionally lending them items of interest and collaborating on research, but we also have a link on **our** Kent Museum’s website, to **their** website. So all are encouraged to browse further.
- Managing and developing our Profile, our good Reputation and our Image and making all visitors welcome – following a request to Chairman Tony Denne by our Deputy Grand Superintendent E Comp David Kershaw, in June – **I and Charles Boxer hosted a visit by Metropolitan Assistant Grand Superintendent E Comp Ian Currans and his ‘In Camera’ Team**. After which he wrote: *Thank you so much for taking the time and trouble to show us around the Kent Museum yesterday. We enjoyed it immensely and all thought it was a wonderful advert for Freemasonry as well as a treasure-chest of masonic gems.*



The Metropolitan team (L to R) Derek Muston, Kevin Saunders, Don McGarr, Ian Currans, Alan South & Matthew Porter

- And I am happy to report further – that I have also just arranged a visit by the **Worshipful Company of Masons** – a high-profile visit by their Master & Senior Officers. Before their visit to the Cathedral in November they will visit our Museum – that makes our Museum open to a wider and influential audience. My contact in this Livery Company says this: *Many thanks again for orchestrating this. It is very much appreciated and a good way to build a welcome bridge between our organisations.* **Ladies, Gentlemen & Brethren – we are, of course, both proud to be supporting the Cathedral Apprentice Stonemasons and the continual essential repair & refurbishment work on this iconic building, at the heart of the City.**

- And I'd just like to mention our appreciation for the offer from **Provincial Grand Secretary W Bro David Alexander** – and one of our **Volunteers in both the Museum and in Provincial Office, W Bro Colin Horton** – so that we will now have the same **photo of our Archway** – which appears on the homepage of the Museum Website – in the **Craft & Chapter Provincial manual 2016-17**, as well as the usual details of officers and managers. All this helps to promote our Museum and to encourage Lodges & Chapters to visit.



- Finally, as many of you will be aware as part of our **marketing, outreach, education and openness** we have had a presence **on TripAdvisor** for a few years. This time last year we reported that due to the quality of visitor comments we had been upgraded to "Recommended" status. We are now delighted to say that, not only are we now firmly established as one of the **Top 20 attractions in Canterbury** but we have received our first "**Certificate of Excellence**" as a result of the excellent reviews that we continue to receive, especially in respect of the **friendliness & helpfulness of our Volunteer Stewards**. **When this report appears on the Museum Website, I will add some TripAdvisor posts for all to see...**

And – even **Wikipedia** gets it right!: "The Kent Museum of Freemasonry, is a Museum in St Peter's Place, Canterbury, Kent with a rare collection of masonic exhibits of national and international importance."

**Going forward** Ladies, Gentlemen & Brethren – we have a plan, as we are often faced with additional questions from men visiting the Museum, who are not yet Masons but keen to find out more, to have a computer terminal in a quiet area of the Museum, where they can sit and browse the Museum's website, the various links to Province and United Grand Lodge – and of course the invaluable "just ask" website. As a membership advisor on the Provincial recruitment team, I know only too well how important a "shop window" the Museum is to men "wondering what it's all about".

Just this week I interviewed a prospective candidate and having only briefly visited before – leading to him browsing the Provincial website – he asked if it would be "okay" for him to look around the Museum, next time with his wife. I'm confident that they will both be made to feel welcome and he will be encouraged to ask even more questions!...

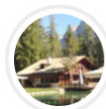
**Thank you Chairman Tony, Provincial Grand Master – and all my Museum colleagues – but above all, to you Ladies, Gentlemen & Brethren for your continuing support and enthusiasm, for attending this morning – and for your kind attention...**

PHOTOS REVIEWS NEARBY

See 3 Previous

### “For something different”

★★★★★ 10 Jul 2016



Graham S (11 reviews)  
George Town, CI

Recently refurbished to a high standard the Freemasons of Kent are keen to provide a very interesting experience particularly to those who are not members. The guides were particularly helpful and knowledgeable.

Helpful? 1

### “At long last I've got to see this museum ”

★★★★★ 24 Jun 2016



Jonh82 (85 reviews)

#### “Interesting”

NEW

★★★★★ Reviewed yesterday

Went along here as my husband is in the Masonic in scotland so wanted to see the history of the canterbury and surrounding areas Masonic lodges. The two gentlemen who were in attendance were friendly and knowledgeable and interested in talking to us. The museum itself is full of memorabilia and was a great insight into the Masonic .

Visited September 2016

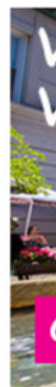
Helpful? Thank karris\_9 Report

Ask karris\_9 about The Kent Museum of Freemasonry

This review is the subjective opinion of a TripAdvisor member and not of TripAdvisor LLC

vs from our community

Write a Review







PHOTOS

REVIEWS

NEARBY

“Great place especially on a rainy day”

●●●●● 8 Aug 2016



Ian G (22 reviews)  
Gympie, Australia

The museum gives a fascinating insight to Freemasonry. The guides are a font of knowledge and will take visitors into the lodge when not being used.

“Great afternoon out. ”

●●●●● 30 Jul 2016



emmie t (203 reviews)  
Canterbury, United Kingdom

I came here with my family one afternoon and we had a great time.

The chairman thanked W.Bro. Eldridge for the presentation and for his contribution in this most important section of the museum, and asked his thanks to be conveyed to W.Bro. Robin Evans.

The Chairman of the Association of Patrons, W.Bro. M.Bassant, delivered his report.

It has been five years; it does not seem that long ago that we were in front of the then Provincial Grand Master, coming up with an idea of how to support the Library and Museum. We are now 5 years into it and we are running. To help us get there I have to pay tribute to two members of the team that we have lost this year, W.Bro. David Anning our Treasurer, and earlier this year, W.Bro. Mac Cheeseman our Secretary. They would not want us to dwell in the past; they would want us to look into the future. To date your Association of Patrons has helped the library and museum by raising in excess of £41,000 in that 5 year period, in this year alone we have raised in excess of £10,500. We should pass these figures on to our lodges and chapters and thank them for it. We want to communicate some messages to all the brethren and everyone in the Province about the Association of Patrons. There are many ways for us to do that, first of all the Provincial Grand Master has given us authority that on our lodge and chapter summonses that we can have the wording 'Associate Patron of the Kent Masonic Museum and Library Trust'. That is very important and the lodge or chapter can be very proud of the fact that they are an Associate Patron. Please remind your Secretary or Scribe that if you are an Associate Patron if it is not on the summons it can be, and if they are not members remind them of the importance of becoming a Patron. In the next six month we will be commencing honorary membership, you have heard from our chairman that we are going to honour V.W.Bro. Roland Wade, there are also a number of other honorary memberships that when the Association was set up it was agreed that we would support. We are now in a position to do this; these will be made by presentations in the Provinces in the next six months. We have in excess of 250 members of the association, over 80 Lodges and just over 20 Chapters. We still have a long way to go that is why we need to look to the future. The goal is that we have every lodge and every chapter in the Provinces as Associate Patrons, reminding the brethren that this is the jewel in our crown, this is their Museum and Library and that they should come and support it and join it in any way that they can. We are also rolling out life membership. A lot of thought has gone into this, as to the average age of the membership, we had an actuary look at this, I calculated it to be £500 expecting that we were all going to live a lot longer, unfortunately brethren the news is that we are not all going to live a lot longer. I am therefore pleased to announce that life membership will be set at £300. This will be reported in the latest news letter inviting people to become Life Patrons. With the change in the Trust, we have had to change our bank account. We have written to all patrons asking them to change their standing orders, we are actively chasing those that have not yet done so. We are always reminding lodges and chapters that they can fund their Membership of the Association of Patrons through their benevolent account. There is a lapel pin that members can wear, those that have not got one please contact W.Bro. Colin Tonbridge the Secretary of the Association. This year we are holding our annual dinner on the 9<sup>th</sup> November at the Canterbury Centre. There will be a talk by a Masonic speaker, Mike Neville, who was our speaker 3 years ago and who was interesting and informative. If you would like to come and bring a guest please let us know. Brethren when you go to your lodges and chapters and are talking about the library and museum we will be sending you aids to do so, we will be sending to the Museum and Library representatives news letters, these are important as they are meant for you to relay a message on to the brethren and companions. Please relay that message on, be excited about it, be upbeat about it, remind them it is their Association of Patrons, it is their museum. Lastly I must thank the team that is behind me, Colin Tunbridge has taken over as the Secretary of the Association of Patrons, and I would like to thank him for the sterling work he has done. We will announce the new treasurer shortly in the news letter; Peter Rhodes is the membership manager, and Wayne Spring. All of those I thank for the assistance they give the Association and you.

The Chairman thanked W.Bro. Bassant for his report and for his and his team's contribution of this important role in the museum.

The Chairman introduced W.Bro. Graham Cuthbert the new facilities manager.

W.Bro. Cuthbert delivered his report.

I came to this job in April and it has been a bit of a learning curve to say the least so I hope that you will bear with me.

I have divided my report into 3 sections: - the structure, the utilities and the visitor numbers. With regard to the structure, we do have a problem with the brickwork on the second story elevation facing this temple/the repointing is falling out in several places, I think that this is because the building was built with lime mortar and the repointing was done with sand and cement and the two don't mix, on the top flat roof the ashfelt has some cracks and is bubbling in places and the cast iron guttering is leaking from several joints with the water falling down the brickwork.

These problems will have to be addressed sooner rather than later and to that end I have had some builders look at them and when they comes back to me with their recommendations and quotes for the various jobs I will put them to the trustees at their next meeting.

With regard to the utilities, I have managed to make us some savings and spend some of our money. Firstly, we have had a few problems with the barrier which involved call out fees and it was felt that as it is not in the first flush of youth that we should have it on a maintenance contract, the CCTV system was not on contract either but now both are with Crime stoppers. The CCTV contract is for £180 and the barrier was quoted at £380 but after a bit of haggling and a few threats that came down to £230 which will include all call outs and labour but not materials. The intruder alarm is, of course, already on contract with the same company. Regarding the gas supply, we were on a flexible rate and paying £1.71 per day standing charge and a unit price of some 5p per kwh. I negotiated a 1 year deal which bought the standing charge down to 50p per day and the unit price down to 3.5p per kwh making us a saving of around £450 per year the reduction was backdated to 11 Feb which threw up quite a healthy credit which we are still working through.

With B T we were somewhat surprisingly paying £170 per quarter for a land line and on top of that £95 per quarter for broadband making a quarterly cost of £265 plus calls. Here I have negotiated a 2 year deal (they wouldn't consider 1 year) which brings the cost for both down to £162 per quarter and we can now use the handsets for calls to landlines and mobiles free 24/7. This change threw up a £144 rebate. Regarding E.D.F. and the electricity supply, we are already into a contract until June 2018 so there was no saving to be made there but we still had 2 electric meters, one for the museum and one for the old provincial offices. These both attracted a quarterly charge of £22.75 each. We now only need one and so I had one removed which gave us a small saving of some £90 per year. That just about covers what we have achieved with the utilities so far.

With regard to visitor numbers the forward plan for the museum was to see a footfall of 10K by the year 2020, I think that it is a credit to all concerned that we will, in fact, pass that milestone this year, in fact the numbers to August this year were already just over 9K, it is however a little bit disappointing to see that freemasons made up the smallest proportion of visitors at just 12% and I really think that we should be actively promoting this wonderful asset that we have got at our lodge meetings at every opportunity. It has been suggested that if a Masonic centre could be encouraged to make up a party of newer masons from their various lodges and bring them over here one evening then there are volunteers who are prepared to give up their evening time to open up and show them round, and perhaps a tour of this temple could be included

That concludes my report but before I sit down I would just like to thank W.Bro John Andrews and posthumously W.Bro David Anning for their help and understanding in making this learning curve a little less steep.

The Chairman thanked W.Bro. Cuthbert for his report and said how much we appreciate his input this year which has lead to some significant changes.

The Chairman, on behalf of the trustees, thanked all the members of the management team for their valuable input during the year.

## **6. Representative's Points.**

No questions had been submitted by the Representatives.

## **7. Any Other Business.**

At this point the Chairman announced this was a special occasion. He went on to say it had already been mentioned that W.Bro. Eddie Baker had retired in April. W.Bro. Eddie has given immense service to the museum over a remarkable 21 years. On behalf of the trustees and all the members of the museum I thank you Eddie for all the dedicated hours you have spent day and night keeping the museum running and looking after its security. I say day and night because I know during those 21 years you were often called out in the middle of the night and drove from your home in Herne Bay in the early hours of the morning to investigate the cause. I assume with much apprehension as to what you might find when you got here. You have of course during those 21 years trained many volunteers and stewards. I suspect into the 100s. You have seen the museum opening hours increase from 2 to 3 days a week to 7 days a week. We fully appreciate your contribution that you have made to the affairs of the museum. In those 21 years you have also be active in the province of East Kent belonging to several Lodges and holding active office in all of them. This culminated in April with your presentation of the Provincial Grand Master's special award which I am pleased to see you are wearing this morning. W.Bro. Eddie, I would like you invite you and your wife Sue to come forward. The chairman then made a presentation to W.Bro. Baker on behalf of the Trustees and all the members of the Trust, and also a bouquet to Mrs. Baker.

W.Bro Baker addressed the meeting.

Ladies Gentlemen and Brethren. I would like to thank the Trustees and all the members of the museum for bestowing this honour on us, I was not unemployed for long, I now work in the seaside museum in Herne Bay, I turned down quite an honour today. The Grand Master is coming to visit my museum today. I did write him a little note saying my apologies but I am on other Masonic Business. Again I would like to thank you all and the many friends I have made during my time at the museum. Thank you all, you have made my job a lot easier by your friendship and understanding and I with you all the best in the future. Thank you.

W.Bro. Clive Manuel the Primus Master of The Roy Albert John Williams Council in the Order of Allied Masonic Degrees presented to the Museum one of only 29 Founders Jewels. The Chairman thanked W.Bro. Manuel and all the members of the Order.

The Chairman declared this, the last Annual General Meeting of the Kent Masonic Library and Museum Trust Closed.

**The Chairman declared the inaugural Annual General Meeting of the KENT MASONIC MUSEUM & LIBRARY TRUST open.**

For those who would like to read the constitution of the new trust, it will be available, all 36 pages of it, on the web site.

**1. Apologies.**

Apologies were received from R.W.Bro. M.Estaugh the Provincial Grand Master of West Kent, W.Bro. R.Waltham Assistant Provincial Grand Master East Kent and 27 Lodge Representatives.

**2. Election of Treasurer.**

In view of the very sad circumstances this item was deferred. Operational responsibility of this Trust did not take effect until 1<sup>st</sup> April 2016 and therefore no accounts have yet been produced as a complete year of activity has not yet taken place.

**3. Election of Trustees.**

The constitution states that any Trustee co-opted during the year must retire at the following Annual General Meeting; he may then offer himself for re-election. R.W.Bro. Mark Estaugh the Provincial Grand Master of West Kent was co-opted during the year and now offers himself for re-election. W.Bro. J.Andrews Secretary of the Trust proposed he be re-elected, this was seconded by W.Bro. R.O'Brien a Trustee. This was carried by the representatives.

**4. Any other business.**

The Chairman invited R.W.Bro. Gordon Dearing the Provincial Grand Master of East Kent to address the meeting.

Ladies, Gentlemen and Brethren. It is a great pleasure for me to be here today, and to see so many of you here in support. It is a special occasion because it is the closing of one chapter and the opening of another. Which is very much part of Freemasonry over the years, we have evolved as an organisation and in 2017 we are celebrating 300 years of Freemasonry. This museum and library in Canterbury is a Kent museum both East and West. I think it is a wonderful centre in terms of representing to the public what we as Freemasons are about, our history and our connection with our community. You have heard from Tony Eldridge a number of connections with our community here in Canterbury and we are having a celebratory service of 300 years of Freemasonry on the 18<sup>th</sup> February next at Canterbury Cathedral. I think that will be an absolutely splendid occasion and I would urge all of you who are able to be there to make sure you are available on that day. The sermon will be given by the most senior Dean in the country, our own dean in Canterbury Dr. Robert Willis, he is a superb and inspirational speaker and on this very special service it will be an occasion not to be missed and of course one of his predecessors was Geoffrey Fisher as Archbishop of Canterbury a Freemason. That history of course is here. The library and museum has been the work of so many people who have put in huge effort, I had the privilege of being involved with the opening of the new museum and library and I have visited to old one in days gone by. What we have now is something to cherish, it is very highly regarded in London and Diane Clements who is the curator and is in charge of both the library and museum in Great Queen Street, rates this museum very highly, as do a number of her colleagues. It is the result of a huge amount of work by a great many people. I pay tribute to Tony Denne who we have not said thank you to, as our chairman of trustees, to the trustees themselves, each of them bring a skill and a huge amount of work to those in the front row here who have put in a huge amount of work in actually making the new museum come to life, to our ladies who have put in a phenomenal amount of work in the library and I am delighted to hear that you are to continue.

This is a golden opportunity to pay tribute to the hard work of Tony Periton our curator and David Anning our Treasurer, both of whom we have sadly lost as you have heard. And it doesn't stop there because if you look at the information available today it is a very successful story, the Patrons were envisaged and have developed to help fund what we do, we don't charge anybody for coming into the new museum and library but the running costs of the new museum and library are of course considerable, and I pay tribute to Mark Bassant for all that he has done and the Patrons have done to help us run it and to give security going forward and if you look at if you look at the numbers on the accounts you will see the very considerable progress that has been made. The numbers who now visit this museum and library are a huge increase on years gone by, and it is held in great esteem in a number of areas and its reputation grows annually and as you have heard from Tony Eldridge, the numbers now are up to 9,000 which is absolutely fantastic compared to where we came from which was a far more modest and lowly number and I would like to thank all the museum and library representatives here today from our various lodges. Your role is extremely important to the life of this museum and library and I would encourage you to go back to your lodges to say come and have a look at it. I am privileged to have all the numbers so I know the number of visits by those visiting Canterbury who are not Masons and those who are Freemasons who come to visit the new museum and library. One of the interesting issues when we changed from what we had been constitutionally in the past to a modern charity we have to seek approval from the Charity Commissioners. The law has changed; you have to demonstrate public benefit in order to be a registered charity these days. The fact that we are in our new guise going forward as a registered charity is thanks to a huge measure the fact that more than 80% of all the people that visit this museum and library are non Masons. The great advantage is of course that a huge number of people have far more knowledge about who we are, what we are and how we work in our communities. It takes away a number of misconceptions about Freemasonry which I think is terribly important in this modern age and I think particularly apt as we approach our celebration of 300 years. So it is very much a good news story but on the basis that something like 85% of all visitors are non masons can I address the brethren who are library and museum representatives, there is room for improvement chaps, get out there and have a chat with everyone in your lodges, it's a wonderful museum and library, encourage them please to come along. To everyone who is here today, thank you very much for attending. I would like to pay particular tribute to Roland Wade; I have known Roland for quite a long time, Roland has put in a tremendous amount of effort into Freemasonry across the whole of Kent in his years which are now considerable, he has been a tremendous supporter of this museum and really has kept West and East Kent together in their involvement in this great undertaking through the years. The significance of the library and museum has increased considerably and I am delighted to see a number of West Kent Masons here today, this is our collectively Museum and library, and I very much hope and believe we will see more Brethren from West Kent as the years go by. It is our asset, it is our face to face with the public, it is a great asset for all of us and I am extremely grateful both on a personal basis and on behalf of the museum and library for all that you have done over the years, it really is greatly appreciated. Let us look forward to the future, 2017, 300 years, I think you have been somewhat curmudgeonly with an ambition of 10,000 by 2020, why cant we have 1,000 visitors a month by 2020? I am sure we will get there. Jim, I am very grateful to you for all you have done in terms of having the Stewards in here to show visitors around, that is incredibly valuable it is enormously important we are open every day, because this has become a major part of the community in Canterbury, it is rated as a visiting area, we are in the top 20 of things to visit in Canterbury and we enjoy very good relations with the civic authorities. I think the fact that we have stewards to show people around is important and it is really important that we are open every day we can be open in order to be available to people. It is our wonderful interface with the public. It is very good news Ladies, Gentlemen and Brethren and I am delighted to be here this morning and as we go into the new era with our new registered charity which has enabled us to say we meet all the criteria of the charity commissioners in the modern world which in itself is an achievement and I delighted we have got that approval, it is very important to our recognition by the Arts Council and others. I am delighted that going forward we have a strong team with a lot of ambition, and as we have heard today we have got a really good base. So lets all look forward to the future.

The secretary announced the date and times of the funeral services of W.Bro. David Anning and W.Bro. Tony Periton, both on Friday 23<sup>rd</sup> September at Barham Crematorium. The Secretary announced the next Annual General Meeting will be on Saturday 16<sup>th</sup> September 2017.

The secretary asked that he be informed of any change in the Lodge Museum and Library Representative, or any change of the Representative's address, telephone number and especially e-mail address.

The Chairman closed the meeting at 12.04

Luncheon was taken at the Masonic Temple, Canterbury, under the presidency of the Chairman W.Bro. Anthony Denne.

# JDAUDIT LIMITED

Registered Auditors

4 Bloors Lane, Rainham, Kent, ME8 7EG

## KENT MASONIC LIBRARY AND MUSEUM TRUST

Trustees report and financial statements

for the year ended 31 March 2016

*Preserves the Past,*

*Engages the Present,*

*Secures the Future*

**Kent Masonic Library & Museum Trust**

**Trustees' Annual Report**

**For the Year Ended 31<sup>st</sup> March 2016**

**Registered Charity No. 1018784**

The Trustees are pleased to present their report together with the financial statements of the Charity for the year ended 31<sup>st</sup> March 2016.

**Objectives and Activities**

The Library & Museum Trust was formed in order to preserve and exhibit the traditions of Masonry in Kent and across the world. The exhibits held by the museum are all kindly donated by members and their families.

The Trustees of the Charity are:

R.W.Bro.G.G.Dearing (President)  
W.Bro.C.E.Boxer (Hon Vice President)  
W.Bro.T.A.Denne (Steering Committee)  
W.Bro.R.S.E. O'Brien (Steering Committee)  
W.Bro.A.W.Pratt (Steering Committee)  
W.Bro.A.B.Eldridge (Steering Committee)  
W.Bro.J.H.A.Andrews (Steering Committee)  
R.W.Bro.M.D.Estaugh (Steering Committee)  
W.Bro.D.C.Anning (Steering Committee)

The Library and Museum is located on a site owned by the Masonic Province of East Kent on a rent-free basis, although the museum is responsible for its own share of service charges and repairs.

**Achievements and Performance**

During the year the charity has continued to carry out its objectives. The income received has been sufficient to meet these commitments.

**Financial Review**

A reserve fund has been maintained by the Charity in respect of Capital Improvements.

The assets of this fund are held separately from the general funds of the Charity.

No restriction is placed upon the general funds of the Charity.

**Statement of Trustees' Responsibilities**

Charity law requires the Trustees to prepare financial statements for each financial period, which give a true and fair view of the state of affairs of the Charity and of the net movement in funds of the Charity in that period. In preparing those financial statements, the Trustees are required to:

- Select suitable accounting policies and then apply them consistently;
- Make judgements and estimates that are reasonable and prudent;



- State whether applicable accounting standards have been followed, subject to any material departures disclosed and explained in the financial statements; and
- Prepare the financial statements on a going concern basis unless it is inappropriate to presume that a Charity will continue in business.

The trustees are responsible for keeping proper accounting records, which disclose with reasonable accuracy at any time, the financial position of the Charity and enable it to ensure that the financial statements comply with recommended practice. They are also responsible for safeguarding the assets of the Charity and hence for taking reasonable steps for the prevention and detection of fraud and other irregularities.

Signed on behalf of the Trustees on

by:

.....  
.....  
.....  
.....  
.....

President

Vice President

Secretary

Treasurer

## KENT MASONIC LIBRARY AND MUSEUM TRUST

### Income And Expenditure Account for the Year Ended 31st March 2016

	2016		2015	
	£	£	£	£
<b>Balance Brought Forward</b>		15,747.77		9,919.17
<b>Income</b>				
<b>Voluntary</b>				
Donations & Collection Box	2,096.50		1,255.00	
Cornwallis Lectures	1,295.00		875.00	
Other Lectures	675.00		75.00	
Association of Patrons	10,541.86		9,829.41	
Profit from Shop	834.24		826.31	
East Kent Regalia Scheme	1,300.00		1,200.00	
Museum Guide Books	1,755.00		370.00	
Province of East Kent	<u>7,500.00</u>	25,997.60	<u>7,750.00</u>	22,180.72
<b>Investment</b>				
Interest		0.11		0.11
		<u>41,745.48</u>		<u>32,100.00</u>
<b>Expenditure</b>				
General Rates	1,405.05		1,373.70	
Water Rates	284.19		156.09	
Insurance	0.00		1,185.23	
Electricity	1,547.48		1,753.50	
Gas	1,501.75		964.62	
General Cleaning	1,163.55		1,103.46	
Repairs & Renewals	1,519.99		341.51	
Computer Maintenance & Costs	1,509.02		3,773.24	
Security & CCTV Maintenance & Costs	1,224.45		1,318.22	
Fire Extinguisher Maintenance & Costs	160.00		210.00	
Telephone	1,051.57		1,455.10	
Printing, Stationery & Photocopying	68.56		190.25	
Postage	156.07		154.50	
Subscriptions	107.80		528.30	
General Expenses	30.00		110.00	
Museum Exhibition Costs	408.41		296.94	
Legal & Professional Fees	360.00		360.00	
Patrons Expenses	0.00		408.29	
Profit on AGM Luncheon	-23.50		-14.50	
Loss on Patrons Dinner	118.80		98.93	
Meeters & Greeters Social Event	-10.00		504.85	
Website Design	560.00		0.00	
AGM Expenses	<u>80.00</u>	13,223.19	<u>80.00</u>	-16,352.23
<b>Balance Carried Forward</b>		<u>£28,522.29</u>		<u>£15,747.77</u>
<b>Balance Sheet as at 31st March 2016</b>				
<b>Assets</b>				
Balance at Bank - Lloyds TSB Current Account		28,396.98		17,248.55
Cash in Hand		360.75		184.75
Nationwide Building Society		50.29		50.18
Stock of Shop		2,755.00		3,205.00
Sundry Debtors & Prepayments		<u>772.31</u>		<u>593.96</u>
		32,335.33		21,282.44
Less: Sundry Creditors		-3,813.04		-5,534.67
		<u>£28,522.29</u>		<u>£15,747.77</u>

# KENT MASONIC LIBRARY AND MUSEUM TRUST

## Library and Museum Capital Improvement Fund

For The Year Ended 31st March 2016

	2016		2015	
	£	£	£	£
Balance Brought Forward		14,190.25		12,540.25
<b>Income</b>				
Legacy (W. Bro Derek Link PPGSwd B )		0.00		1,000.00
In Memory of W. Bro Brian Kenneth Stevens		0.00		1,600.00
Anonymous Donor		0.00		650.00
		<u>14,190.25</u>		<u>15,790.25</u>
<b>Expenditure</b>				
<b>Refurbishment Costs to date:-</b>				
New Library & Museum Entrance Arch		0.00		-1,600.00
Replace Gas Boiler		-1,780.00		0.00
8, Graphic Display Panels		-1,551.60		0.00
Miscellaneous		-1,262.38		0.00
		<u>£9,596.27</u>		<u>£14,190.25</u>
Balance Carried Forward				

### Balance Sheet as at 31st March 2016

<b>Assets</b>			
Balance at Bank - Lloyds TSB			
Current Account		9,596.27	14,190.25
		<u>£9,596.27</u>	<u>£14,190.25</u>

**KENT MASONIC LIBRARY AND MUSEUM TRUST**

**Independent auditors' report to the members of KENT MASONIC LIBRARY AND MUSEUM TRUST**

We have audited the financial statements of Kent Masonic Library and Museum Trust for the year ended 31 March 2016 which comprise income and expenditure account and balance sheet and the related notes. These financial statements have been prepared under the historical cost convention and the accounting policies set out therein.

**Respective responsibilities of trustees and auditors**

The trustees are responsible for the preparation of the financial statements in accordance with applicable law and United Kingdom Accounting Standards.

Our responsibility is to audit the financial statements in accordance with relevant legal and regulatory requirements and United Kingdom Auditing Standards.

We report to you our opinion as to whether the financial statements give a true and fair view and are properly prepared in accordance with appropriate legislation. We also report to you if, in our opinion, the trustees report is not consistent with the financial statements, if the trust has not kept proper accounting records, if we have not received all the information and explanations we require for our audit, or if information specified by law regarding remuneration and transactions with the trust is not disclosed.

We read the trustees report and consider the implications for our report if we become aware of any apparent misstatements within it.

**Basis of audit opinion**

We conducted our audit in accordance with United Kingdom Auditing Standards issued by the Auditing Practices Board. An audit includes examination, on a test basis, of evidence relevant to the amounts and disclosures in the financial statements. It also includes an assessment of the significant estimates and judgements made by the directors in the preparation of the financial statements, and of whether the accounting policies are appropriate to the company's circumstances, consistently applied and adequately disclosed.

We planned and performed our audit so as to obtain all the information and explanations which we considered necessary in order to provide us with sufficient evidence to give reasonable assurance that the financial statements are free from material misstatement, whether caused by fraud or other irregularity or error. In forming our opinion we also evaluated the overall adequacy of the presentation of information in the financial statements.

**Opinion**

In our opinion, the financial statements give a true and fair view of the state of the company's affairs as at 31 March 2016 and of its profit for the year then ended and have been properly prepared in accordance with legislation.

**JAD Audit Limited**  
Registered auditors

**4 Bloors Lane**  
Rainham  
Kent  
ME8 7EG