

A Short History  
of the  
Kent Masonic Library  
and Museum

---

October 1994

## FOREWORD

by

Worshipful Brother Ronald B. de Gray  
Assistant Provincial Grand Master (East Kent)  
Past Provincial Senior Grand Warden (West Kent)  
Chairman of the Kent Masonic Library and Museum Trust

The Kent Masonic Library and Museum at Canterbury is a priceless asset for members of all the Orders of Freemasonry throughout the county of Kent. That it exists at all is due to the original foresight and leadership of the first Lord Cornwallis in deciding that a separate building should be provided for the purpose: that it is now arguably the finest Masonic Library and Museum in the country outside Grand Lodge in London has been due to the energy and devoted service of many Freemasons over the last 63 years. The present excellent state of the building and its contents and the financial health of the Library and Museum as an institution is something of which we can be justifiably proud. It was not always so, however, and we are indeed fortunate that the work of the last seven years or so has been so successful. It is therefore fitting that a record should be made of what has happened.

This small booklet has been produced by Peter Gahan to fill that need and I feel sure it will find a ready home on the bookshelves of many Kent Freemasons.



Leybourne, Kent  
April, 1996

### Acknowledgements

In compiling this short booklet I have needed to draw on many references including particularly the Minute Book of the Library and Museum Committee, from 1933 to the present day, and issues of the Freemasons' Manual for Kent and later for East Kent. Above all I owe a debt of gratitude to Kenneth Holter, long time Curator of the Museum, whose knowledge of the Museum is boundless and of whose records I have made use. I am also indebted to Tony Gosby and David Milne for permission to reproduce their drawings in Appendices 2 and 3, and to the Kent Messenger Group for permission to reproduce their photograph on page 11.



Snolden, Kent  
April, 1996

## A SHORT HISTORY OF THE KENT MASONIC LIBRARY AND MUSEUM

### I The origins of the Library and Museum at Canterbury

The Provincial Grand Lodge of Kent was formed in July 1769, when the Hon. Robert Walsingham was installed as Provincial Grand Master at Chatham. From January 1777, the record of the history of the Province exists in the first Minute Book, which is in the library at Canterbury, and shows continuing progress for the next forty years.

Until the end of the nineteenth century, Masonic Lodges had met mostly in public houses in the City, but in 1880 they joined together to obtain an establishment at 38 St. Peter's Street and built the Canterbury Temple in the garden. United Industrious Lodge No 31 had been collecting books and other items of Masonic interest and, once the Temple was established, these and many treasures collected by other Lodges were all brought together in the Lodge of Instruction room at the rear of the premises.

In 1919 the East Kent Masters' Lodge N<sup>o</sup> 3931 was Consecrated at Canterbury and its first Worshipful Master was Colonel F.S. Cornwallis, Provincial Grand Master of Kent, later to become first Baron Cornwallis of Linton and, in 1926, Deputy Grand Master of the United Grand Lodge of England. It is very largely to his efforts that the Library and Museum at Canterbury owes its existence for he conceived the idea after being shown the collection of memorabilia and books already assembled. There were claims that a Kent Library and Museum should be housed in the Bromley area where a large number of Kent Lodges met; and also at Maidstone, the County Town where the Provincial offices were located; but the Provincial Grand Master decided that Canterbury was the proper location. Accordingly in 1920 he set up a committee chaired by W.H. East of Dover and with H.C. Page as Secretary and H. Biggleston as Treasurer, both of Canterbury, with the object of raising money to erect a building to house the many treasures that the Province of Kent, its Lodges and private members had collected over the years, for all to see. He also wanted to make sure that all those treasures remained in Masonic hands because, in the past, many such valuables had disappeared forever.

In the 1923 edition of the Freemasons' Manual for Kent there is a first mention of the Library and Museum (see Appendix 1) from which it is to be noted that an annual subscription of one guinea was required from every Craft Lodge and every Royal Arch Chapter in the Province of Kent. In January 1924 a "General Catalogue of Books, Pamphlets, Important Articles, Papers, Essays &c., in the Library & Museum, Masonic Temple, Canterbury" was printed, which contains some 1,600 entries. However, many of these were duplicated in that, for example, although editions of *Ars Quatuor Coronatum* were listed as single entries, their contents were also listed separately in the alphabetical index; which presumably accounts for the fact that the 1929 edition of the Manual records that the Library "now comprises some 550 books".

By 1931 the Provincial Grand Secretary, F.J. Bryan, was able to report that "It is hoped that Provincial Grand Lodge will provide - at as early a date as possible - better accommodation for the ..... collection, land having already been acquired for the purpose. Will all Lodges and Chapters in Kent as well as other degrees make a point of subscribing so as to assist in the equipment of the proposed new building." The acquisition of land is an allusion to the fact that, in 1925, the sum of £1,036 4s 11d had been paid to Brother Edward Dean of St. Augustine's Lodge N<sup>o</sup> 972 for the purchase of land being the garden of his premises at 34 St. Peter's Street, next door to the Temple.

In 1932 the Provincial Grand Secretary again reported that he "hoped that negotiations with Provincial Grand Lodge ..... for provision of new and larger premises will be successful." However, the appeal for funds was

clearly going well as the request for subscriptions was no longer mentioned. Colonel F.G. Hayward, FSI, a distinguished Dover Freemason had by now been appointed as the architect for the project to erect the Library and Museum on the available land at 34 St. Peter's Street, Canterbury, at an estimated cost of £3,000, which sum was transferred to the Library and Museum account by the Provincial Grand Treasurer. The principal contractors were W.W. Martin of Ramsgate and G.H. Denne & Son of Walmer, but there were many sub contractors. The building was completed at the end of June 1932 and taken over by the Province on 1st July. It was opened officially by the Provincial Grand Master on 19th April, 1933. In the 1934 edition of the Freemasons' Manual for Kent the Provincial Grand Secretary wrote that "the building is ..... of outstanding merit ..... worthy of containing the treasures collected by ..... Kent and so the history of Kent Masonic Craft here finds a permanent home."

At this juncture it is necessary to digress and explain that after the Great War of 1914-1918 the Grand Lodge "Masonic Million" appeal was launched to raise funds for the building in Great Queen Street, London of a new Freemasons' Hall as a suitable memorial, the foundation stone for which was laid on 14th July, 1927. The new building was erected on the site of the former (1776) Freemasons' Hall, which had consisted of a number of inter-connected buildings including a library and museum. These were progressively demolished and replaced and in 1931 when it was the turn of the library and museum a number of valuable items became available. These included five large stained glass windows; three solid mahogany doors and frames; a pair of superb library doors, 9 feet high including fanlight and 6 feet wide, fitted with hand cut bevelled Vauxhall glass panels and silver handles and finger plates; a set of fine leather seated and backed chairs bearing the Grand Lodge crest; and a number of exhibits and display cases. No doubt due to the good offices of Lord Cornwallis as Deputy Grand Master, all these items were brought to Canterbury and in due time were included in the new Kent building. Whether the original intention was to 'look after' these items while the London building was going on and they were 'inadvertently' incorporated at Canterbury is not established, but, on his visit to Canterbury in 1993, the present Librarian and Curator of Grand Lodge, J.M. Hamill, said he would still like "his windows and doors" back!

The building is constructed of 13½ inch brick and measures 52 feet in length by 26 feet in width and height - significantly for Freemasons, a double cube. The five stained glass windows are each 5 feet wide by 10 feet high with semicircular apexes and are representative of:-

- |                 |  |
|-----------------|--|
| North West wall | 1. Arms of HRH Prince of Wales, Grand Master from 1875 until becoming Edward VII in 1901.  |
|                 | 2. Arms of the United Grand Lodge of England.  |
| North East wall | 3. Duplicate of 1.   |
|                 | 4. Arms of William Archer, Viscount Holmesdale, afterwards Earl Amherst; Provincial Grand Master 1860-1903; Pro Grand Master 1898. |
| South East wall | 5. Arms of the fifth Earl of Warwick, Deputy Grand Master 1899-1903.   |

The pair of entry doors on the South West side are of solid oak with iron fittings and were formerly at the main entrance of St. Mary's College, part of the Jesuit Monastery in Hales Place, Canterbury. The College was demolished between the Wars and surplus materials sold by auction. The doors were acquired by J. Edwards of St. Augustine's Lodge N° 972 and presented by him to the Library and Museum.

The flooring of the vestibule between the entry doors and the library doors and the two small flanking rooms is of polished tiles, but the floor of the main building itself is of solid mahogany strips. The roof is flat

apart from the centre section, which has inset horizontal plain glass leaded lights with an exterior covering of iron framed vertical glass walls with a pitched glass canopy above. This arrangement gives some natural light to supplement that from the windows and in turn this was originally supplemented by three large 300 watt electric lights suspended at a height of some 15 feet on the centreline of the building.

By the time the building was completed, management of the Library and Museum was vested in a Library Committee required by its By-Laws to meet at least twice per year. Day to day running was the responsibility of the Provincial Library and Museum House Committee, which met for the first time on 7th April, 1933. At that time, the Library and Museum was funded by a grant of £250 per year from the Province of Kent, which was intended to cover maintenance, insurance etc, but not the acquisition of exhibits and books. During the Second World War of 1939-1945 all valuable exhibits were packed away and the building was used for general storage. Fortunately it did not suffer damage from either enemy action or otherwise and one meeting of the Library Committee was held in the museum on 28th July, 1944. Regular meetings were resumed in 1946.

## II Development

After the Second World War the story of the Library and Museum is one of steady progress and consolidation. The collection of memorabilia of all kinds and books for the library increased and some efforts at producing a catalogue were attempted, although none has so far succeeded in getting beyond the handwritten stage. With the abolition of wartime restrictions on the use of building etc materials, redecoration took place and a considerable amount of work was done to improve the display of exhibits. As far as finance was concerned, the annual grant was £600 in 1968 and £800 in 1969; but the latter was insufficient to meet all requirements for rates, gas, water, electricity, fuel for the boiler, insurance, cleaning, printing and stationery and so on, plus the Custodian's salary and honoraria for the Librarian and for the Secretary; and there was an excess of expenditure over income of £87 11s 3d. By 1972 the grant had again been reduced to £600 and there was an overdraft of some £600. The Province duly paid off the overdraft, but the grant was not increased.

On 31st May, 1973 the Province of Kent was divided into the Provinces of East Kent and West Kent, an event which was to have a considerable effect upon the Library and Museum. Initially it was agreed that it be the joint responsibility of the two new Provinces and, in December 1973, the Chairman, Dr E.D.Y. Grasby, wrote to the Secretaries of all Craft Lodges in both Provinces asking them to elect at their Installation Meeting a Brother to act as Lodge Library and Museum Representative. An annual meeting of Lodge Representatives was proposed initially for November 1974, but had to be abandoned because of catering difficulties and the first such meeting was not held until 14th June, 1975.

Until 1977 the Province of East Kent continued to be administered from the offices of the former Province of Kent at 62 London Road, Maidstone, but these were due to be sold and a new home for the East Kent office had to be found. On 1st April, 1977 a meeting of the Library Committee agreed that part of the building at Canterbury could be used for this purpose. As part of the original building two small rooms had been created between the North East corner of the Museum proper and the adjacent wall of the Temple [see page 12 and Appendix 3, Fig 1]. The second of these, an L-shaped room, had been taken into use to house the bookcases and other accoutrements of the Library in 1973; but the first room was available and this was now taken into use by the Provincial Grand Secretary, A.G. Stutely, who was also Secretary of the Library and Museum. The move of the Provincial Office

to Canterbury took place in 1977, following which 62 London Road, Maidstone was sold and the proceeds divided equally between East and West Kent.

The housing of the Provincial Office was intended originally to be only a temporary measure and, in addition to the Provincial Grand Secretary's office mentioned earlier, office space was created by the erection of temporary partitioning within the South East Corner of the museum. As time passed, however, and no other suitable location presented itself, occupation of this comparatively large part of the building by the Provincial Office assumed a more permanent nature. Accordingly in 1986-1987 building work was undertaken to provide a new office for the Provincial Grand Secretary on the outside of the South East corner of the building. The new offices were built in part on the site of the former museum boiler house and as part of the work a new gas fired heating system was provided for the whole building. Although the provision of the external offices enabled the Provincial Grand Secretary to vacate the office within the building, the Provincial Office remained in occupation of the partitioned area.

By this time, A.G. Stutely had been promoted to Assistant Provincial Grand Master and been appointed Chairman of the Library and Museum. D.R. Smith, who had been Provincial Grand Secretary and Secretary of the Library and Museum retired in 1987 and his place was taken by the Provincial Assistant Grand Secretary, R.F.W. Whitehead, who decided to hand over the duties of Secretary of the Library and Museum to D.K.L. Morgan, the new Provincial Assistant Grand Secretary. H.W.F. Hooker, who had been Treasurer since 1971, was finding it difficult to continue and as the duties were at that time relatively light they were added to those of Secretary in 1988.

In the meantime, under the terms of a Deed executed in 1977 by representatives of both Provinces, responsibility for the Library and Museum was changing and by 1987 the Province of West Kent ceased to take part and the Province of East Kent became the sole owner. West Kent Craft Lodges ceased to elect Representatives, but the Province retained two seats on the Committee, albeit non-voting. As part of the arrangements, any exhibits, books etc deemed to have been the property of West Kent and its members or on loan were subject to recall. In the event, however, West Kent has not established a library and museum of its own and in fact maintains a considerable continuing interest in the establishment at Canterbury. Members of West Kent Lodges continue to attend the annual meetings of Lodge Representatives in a private capacity and the Province of West Kent has given very considerable support to the later events described in the next two chapters hereof. In some recognition, the Provincial Grand Master of West Kent, S.F.N. Waley, was made an honorary Vice President in 1993.

### III Redevelopment

In the mid-1980's contributions of books and memorabilia to the library and museum continued to accrue and the loss of space to offices was increasingly keenly felt since there was hardly any room to improve displays and the library in particular was very cramped. However, by 1987, Dr R.J. Edney had been appointed Chairman and in the course of the next two years he considered how this loss of space might be alleviated. At the annual meeting of Lodge Representatives held in the Canterbury Temple on 16th September, 1989 he produced a sketch plan (see Appendix 2) for the erection of a mezzanine floor on top of the partitioned portion of the Provincial Office within the museum, which could be accessed at one end by a helical staircase. The partitioned area was not strong enough to support the extra floor without considerable strengthening and the total cost was therefore estimated to be of the order of £40-50,000. In any case, because the Province of East Kent was at that time engaged in raising funds for the 1992 Festival of the Royal Masonic Benevolent Institution, it was decided that funding for such a project could not actively be sought for fear of adverse effect on the Festival. Furthermore, the project was not ideal because it tended to make the office occupation of part of the museum even more permanent. Nevertheless, after the announcement that consideration was being given to such a project, some contributions were received from Craft Lodges and elsewhere and were retained in a separate account until such time as circumstances might change. By 30th September, 1990 this extension fund stood at £1,461.72.

Also at the 1989 meeting, Dr Edney, having been promoted to Deputy Provincial Grand Master, handed over the Chairmanship to R.B. de Gray, who had been appointed Assistant Provincial Grand Master in 1988. D.K.L. Morgan was unable to attend the meeting owing to ill health and his place was taken by P.F.W. Gahan, who was later appointed Secretary and Treasurer of the Library and Museum.

The new Chairman continued the process of trying to solve the problem of lack of space and early in 1991 set up a Working Party to examine the possibility of building additional office space on top of the existing external offices with the aim of removing the partitioned area within the museum. After several meetings plans were produced (see Appendix 3, Figs 1-4) by D.I. Milne, a retired surveyor and Past Master of Brothers of Birchington Lodge N° 5226. However, this plan proved to be even more costly than the previous idea and it, too, was held in abeyance.

About this time it was proposed that a new location altogether might be found for the Provincial Offices either by hiring or acquiring suitable premises either in Canterbury or in the general area bounded by Canterbury, Faversham and Ashford. Once again, expense would be a problem because not only would it be costly to acquire new premises, but the Library and Museum would then have to be self-financing, an arrangement which had been progressively abandoned since the arrival of the Provincial Offices in 1977. Effectively, the Library and Museum was now funded entirely by the Province of East Kent and any monies held by the Treasurer were not being used, but carefully preserved until the situation might change. Nevertheless, efforts were made to find suitable premises for the Province but without success.

In the meantime the necessary work was undertaken with a view to obtaining charitable status for the Library and Museum with the object inter alia of reducing costs. It had in fact always been available to members of the general public at large (although admittedly hardly ever used as such) and was clearly of value as a source of education and research. It was therefore decided to seek registration as a Charity and to this end a Deed was drafted to create The Kent Masonic Library and Museum Trust. There were delays while the details were sorted out to the satisfaction of the Charity

Commissioners but finally on 9th March, 1993 Registration was achieved on the basis of the Deed of Trust appointing as Trustees the Provincial Grand Master, his Deputy and Assistants for the time being, and providing for a Management Committee and how its members were to be appointed or elected.

By September 1992 the 1992 Festival had been successfully concluded and, with the expected advantage of impending Registration as a Charity which would facilitate contributions from designated charitable sources, it was decided to launch a once-and-for-all appeal for funds to restore space to the museum and hopefully to put the Library and Museum on a sound financial basis. By this time J. Bony had succeeded J.A. Porter as Provincial Grand Master of East Kent and the former now gave his approval and considerable support. Accordingly, at the annual meeting of Lodge Representatives on 19th September, 1992 the Chairman, R.B. de Gray, made the announcement. At the time the preferred idea was still to move the Provincial Office to another location and, until this might be found, the amount of money required was indeterminate. However, it was hoped that East Kent Craft Lodges would be able to contribute about £200 each and the appeal was broadened to include Royal Arch Chapters and all other Orders of Freemasonry in Kent: so a broad target of £40,000 was announced.

As part of the administrative arrangements following the decision to seek charitable status and appeal for funds, the duties of Secretary and Treasurer were separated. Accordingly, at the 1992 annual meeting, J.A. Dalley, a Past Master of Beacon Court Lodge N° 1967, was elected Treasurer. The meeting also agreed a set of By-Laws, which provided inter alia for the setting up of a Finance and General Purpose Sub Committee to be responsible to the Management Committee for the day to day running of the Library and Museum. This Sub Committee met for the first time on 13th October, 1992 when it consisted of the Chairman, R.B. de Gray; the Treasurer, J.A. Dalley; the Secretary, P.F.W. Gahan; and one of the elected members of the Management Committee, L.G. Shugrue. At later meetings the Curator, K.J. Holter and the Librarian, G.R. Dack, were added and in due course D.I. Milne (who has already been mentioned in connection with the 1991 Working Party) was co-opted to act as Project Manager for the ensuing work.

By early 1993 some £25,000 had already been received, £9,000 of which had been donated other than by Craft Lodges. At this time J.R. Ebling became Provincial Grand Secretary designate and, after rapidly assessing the position, he decided that by taking advantage of improved computer technology he would be able to reduce the amount of space required by the Provincial Office such that the partitioned area within the museum would no longer be required. This was most welcome news particularly because it removed the uncertainties in the situation and led to the hope that the Library and Museum would recover all its 'lost' space at a moderate cost. Accordingly on 24th February, 1993, on instructions from the Committee, the Secretary wrote to all East Kent Lodge Representatives informing them that the original intention to move the Provincial Office had been abandoned, at any rate for the time being, but that money was still required to implement the changes now involved.

By the middle of March 1993 the Appeal total had reached £31,000 and was gathering momentum such that it was already clear that the original target of £40,000 would be exceeded. Accordingly, at its meeting on 16th February, 1993 the Management Committee agreed that experts should be consulted, including the Librarian and Curator of Grand Lodge, with a view to undertaking the necessary work to rehouse the library, improve the lighting of the museum and generally to bring the building up to standard.

Following a suggestion by the Librarian, G.R. Dack, it was agreed that the partitioned office area should not be eliminated altogether but reduced



to about one third of its original size so as to accommodate the library. There was just sufficient space to fit in all the existing bookcases as well as a small table and chairs. The partition walls, which had formerly ended in an insubstantial flat boarded roof, were extended vertically to meet what was expected to be the new ceiling level. This was the first step in the reconstruction and was carried out as soon as the Provincial Office withdrew into its external offices. Work began on 3rd May, 1993 and progressively from then on the walls of the museum were cleared and the display cases moved as necessary to allow the various works to proceed. The very considerable amount of effort involved was carried out almost exclusively by K.J. Holter and G.R. Dack throughout the summer months.

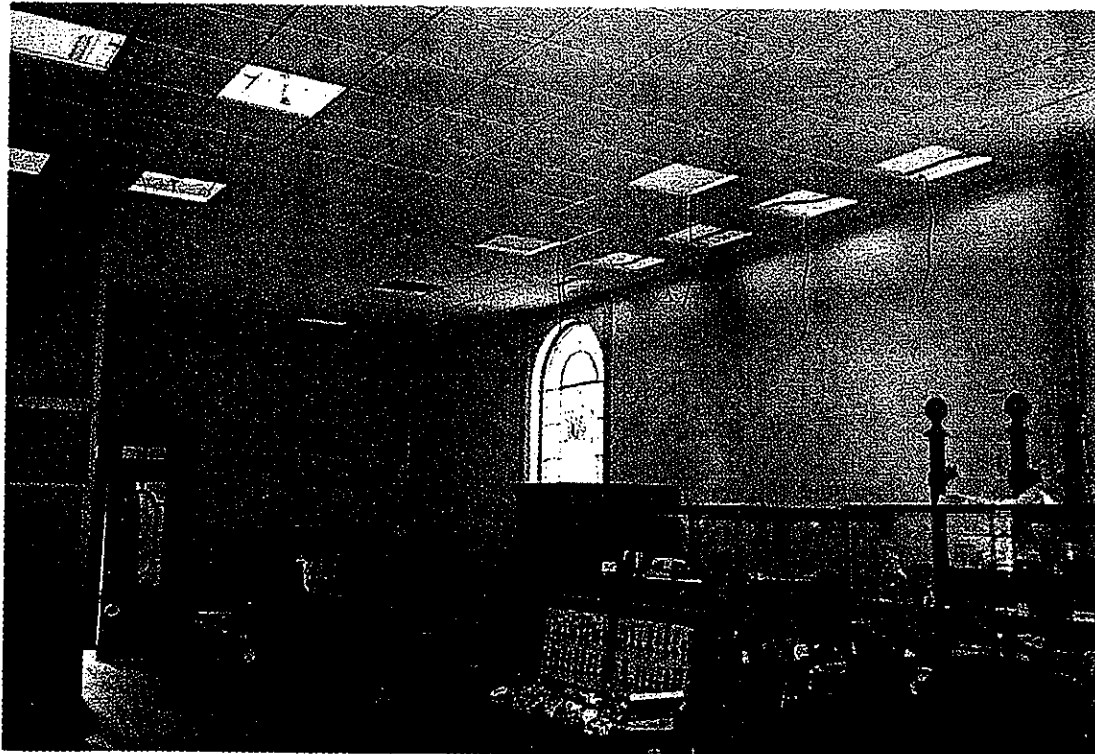
The next step was to remove the existing lights and install a suspended ceiling over the whole of the museum area except the new library, which could accommodate a modern low voltage lighting system custom designed to illuminate the walls and display cases. The original ceiling was of a vaulted nature but the new ceiling is horizontal and installed just above the architrave at the top of the windows. The transformers for the lighting system are contained within the roof space and the lights are controlled from a switchboard in the right hand entry vestibule. As part of the electrical installation a new power ring main was installed around the walls of the museum.

While the electrical work was being carried out it was discovered that the pipes of the original heating system, which were beneath the museum floor and had not been removed when they became redundant, had been insulated with asbestos. Especially as the building was destined to be open to the general public on a regular basis it was essential that this be removed or neutralised where removal was impossible, notably the area of the library and a large fixed display case in the North West corner (see illustration on page 10). Eradication was carried out by the City Council authorities between 7th and 10th August, 1993. Although the need for this work had not been foreseen, it was completed without serious effect on the planned timetable for the overall work, which envisaged completion at least of all internal work by the start of the new Masonic season on 1st September, 1993.

It had at first been thought that the glass roof would need to be either made good or perhaps replaced altogether, but in the event expert opinion was that, subject to some minor work on rust prevention etc, it should last for at least 20-30 years. The remainder of the fabric of the building was in reasonable condition, although there was some evidence of movement in the past and a great deal of the pointing was decayed. At the time the external offices were built, some underpinning of the main building had been necessary and it was expected that this together with re-pointing would serve to confirm that further movement was unlikely.

A number of other matters required attention as part of the overall plan including the installation of a dual entryphone system to control access separately to the Provincial Office and the Library and Museum; changes to the telephone system by moving the small Provincial exchange into the outer offices and providing a separate telephone for the Library and Museum; provision of an emergency fire exit for the external Offices; and alterations to the alarm system to include a remote resetting facility. The major portraits were cleaned, restored and rehung, the museum floor was refurbished and the building redecorated internally and the Chairman was able to announce at the first Annual General Meeting of the new Trust on 18th September, 1993 (replacing the former annual meeting of Lodge Representatives) that all internal work had been satisfactorily completed and it was expected that all external work would be completed before the onset of winter.

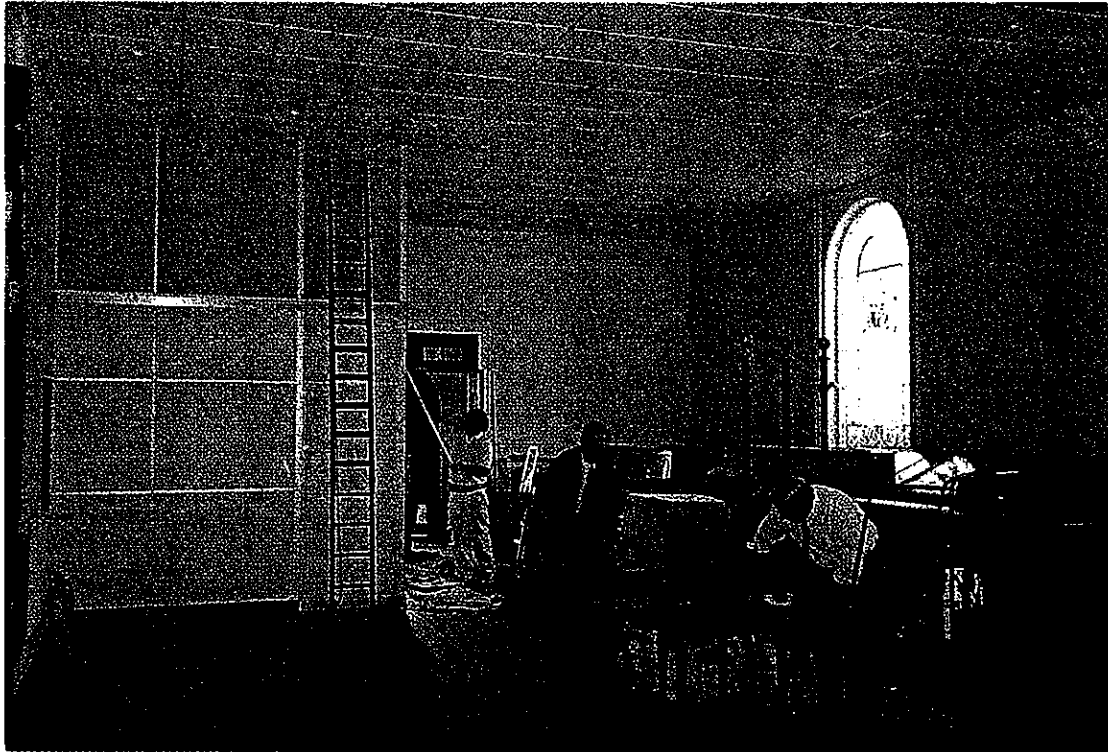
[continued on page 17]



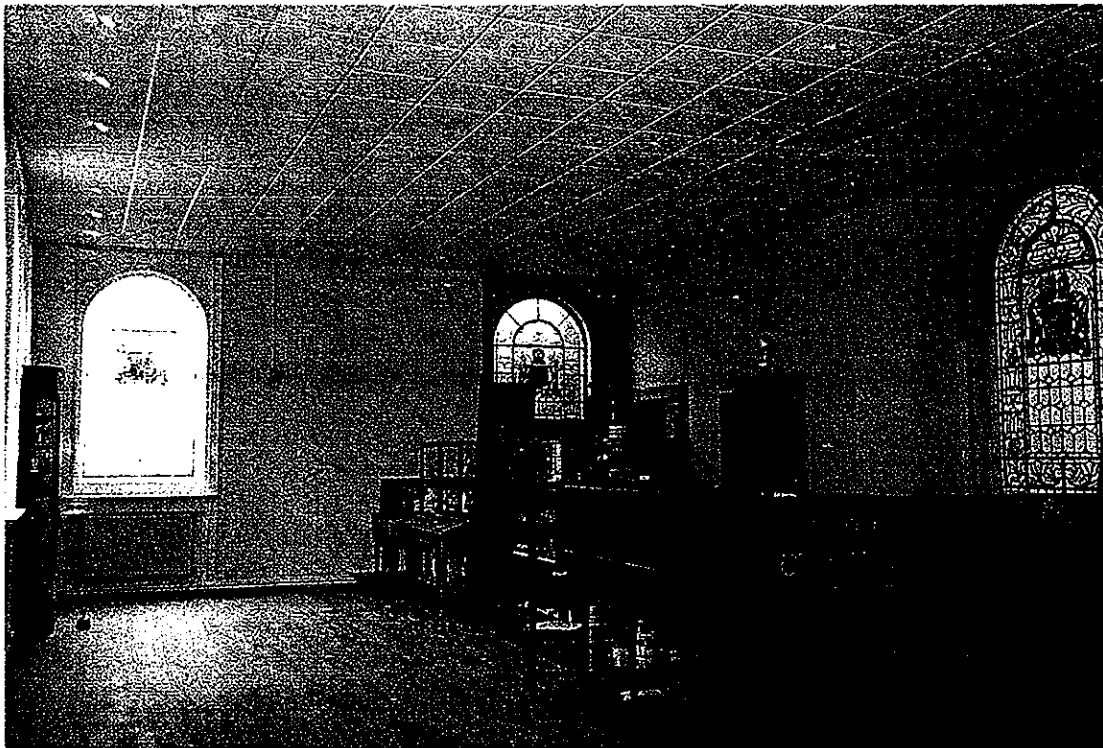
*July 1993 showing suspended ceiling and lighting being installed.*



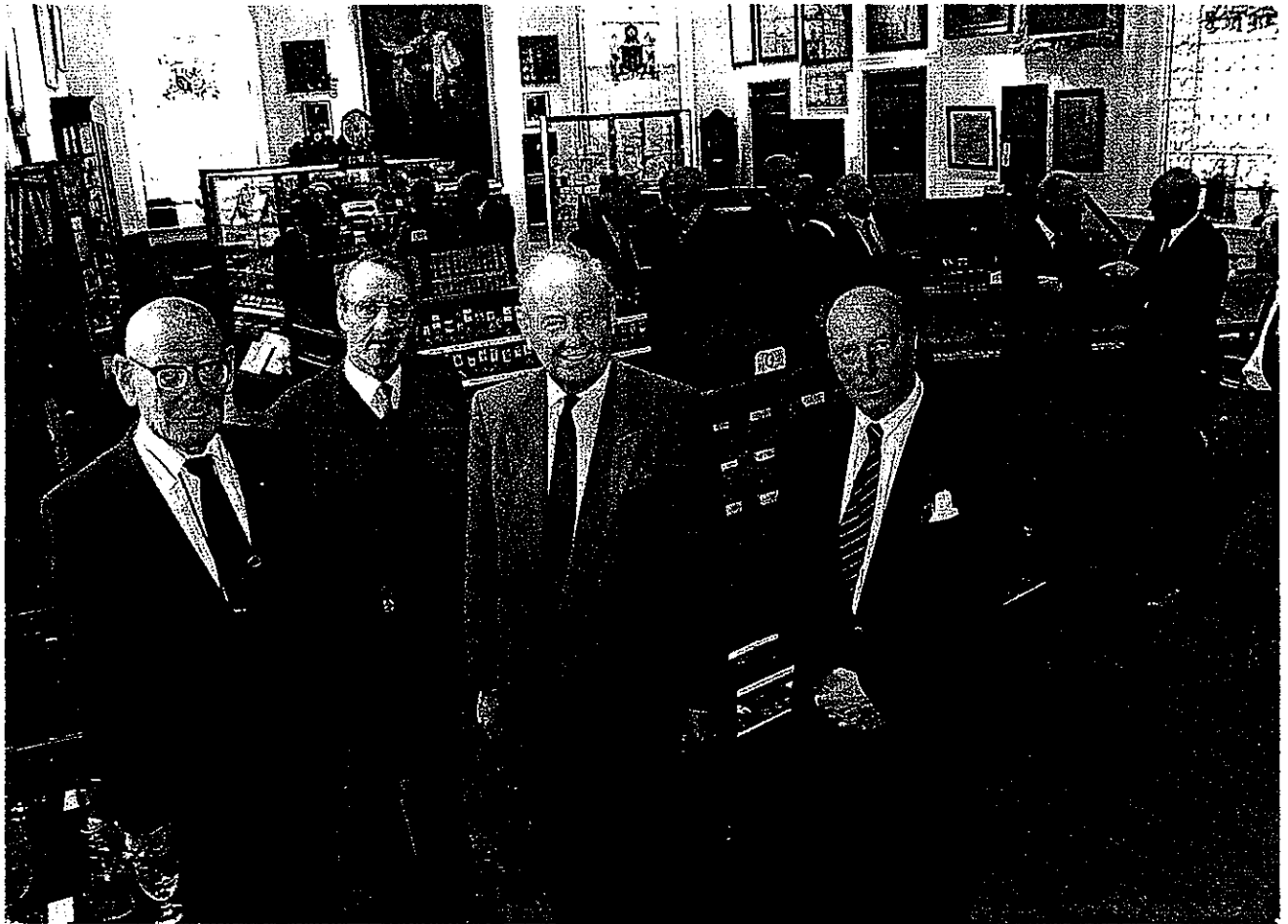
*The museum in 1992 before work started showing part of the original ceiling and lighting.*



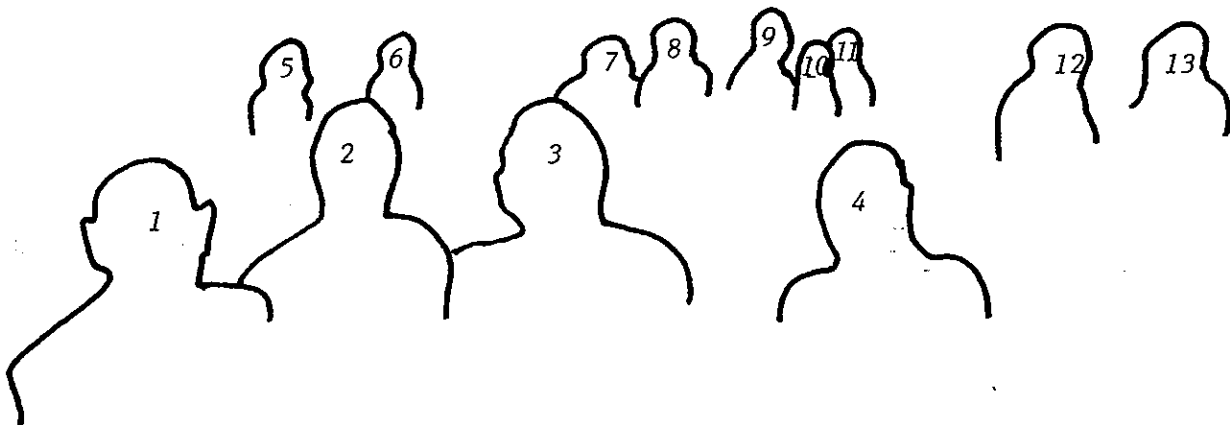
*July 1993 during redecoration showing the Curator (L) and Librarian (R) attending to exhibits.*



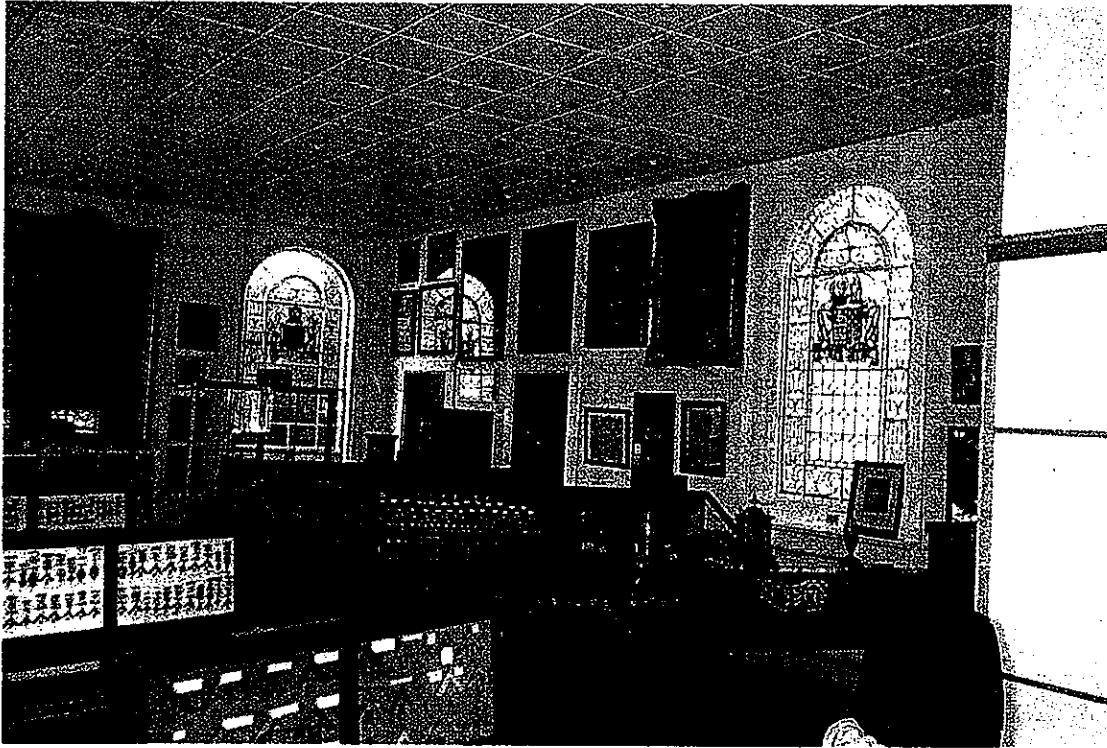
*July 1993 showing part of the floor having been sanded ready for treatment and the large display case in the North West corner which could not be moved. The two doors in the opposite corner lead to the former library and the Secretary's office.*



*Re-opening of the Library and Museum on 21st October, 1993*



- |    |   |    |  |
|----|---|----|--|
| 1  | <i>Dr R.J. Edney, Vice President</i>                      | 7  | <i>W.G. Boggia, Graveney Court Lodge</i> |
| 2  | <i>K.J. Holter, Curator</i>                               | 8  | <i>R.B. de Gray, Chairman</i>            |
| 3  | <i>J. Bonomy, President</i>                               | 9  | <i>D.I. Milne, Project Manager</i>       |
| 4  | <i>G.R. Dack, Librarian</i>                               | 10 | <i>A.C.W. Kennedy, Museum staff</i>      |
| 5  | <i>K.F. Tinklin, Member of Committee</i>                  | 11 | <i>F.L. Turner, Museum staff</i>         |
| 6  | <i>J.G. Langston, Publicity Officer</i>                   | 12 | <i>J.R. Ebling, Provincial Grand</i>     |
| 13 | <i>P.W. Bean, Provincial Grand Director of Ceremonies</i> |    | <i>Secretary</i>                         |



*October 1993 - looking towards the North East corner.*



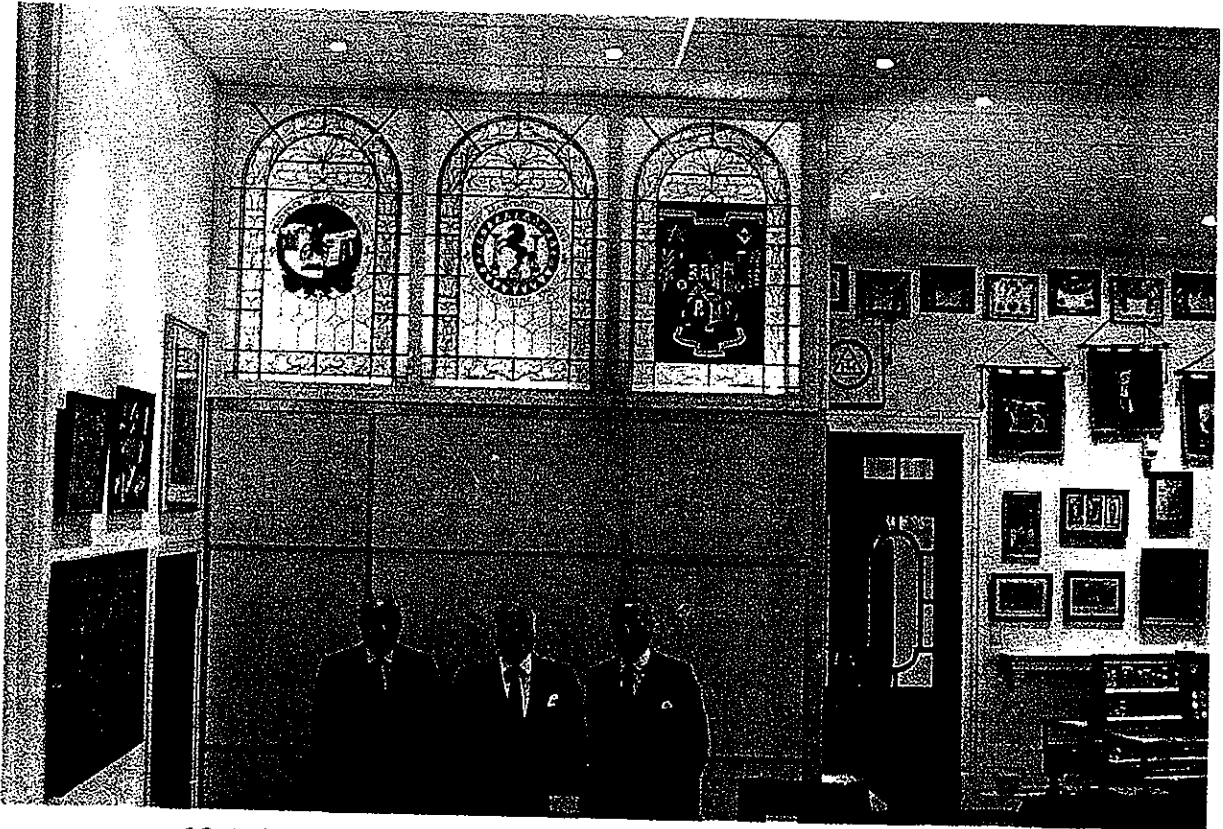
*Entrance and South West wall.*



*October 1993 - glass displays.*

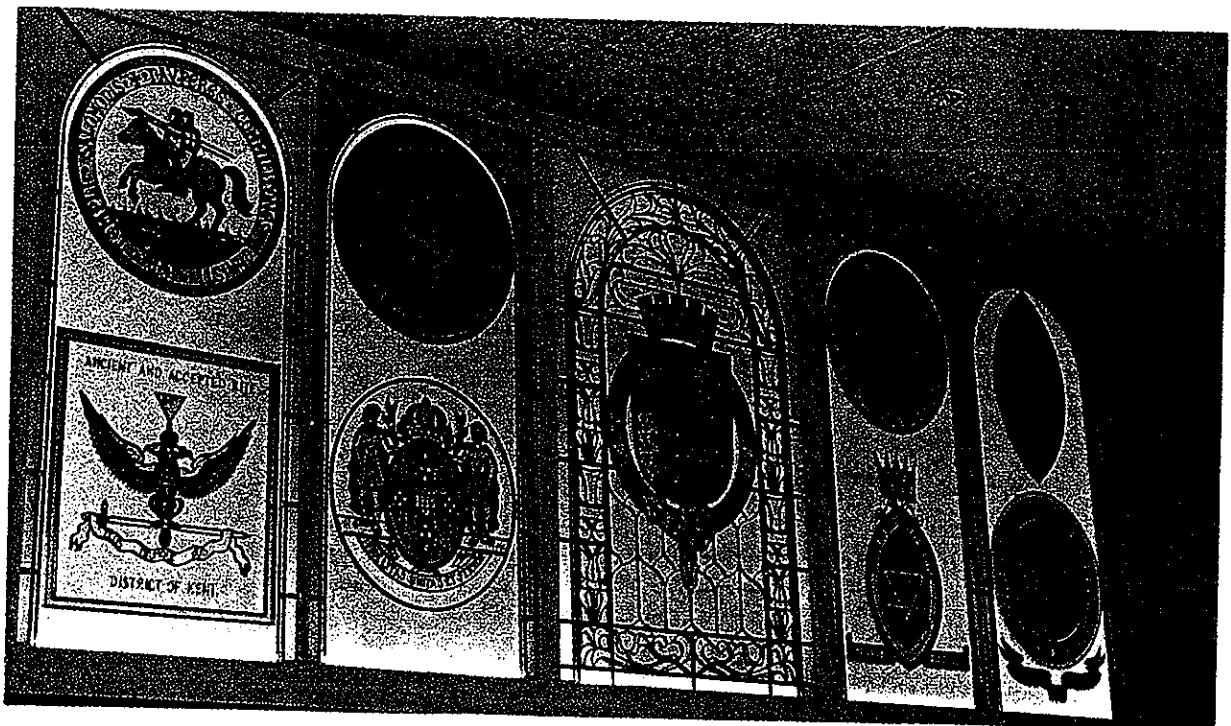


*Porcelain display.*

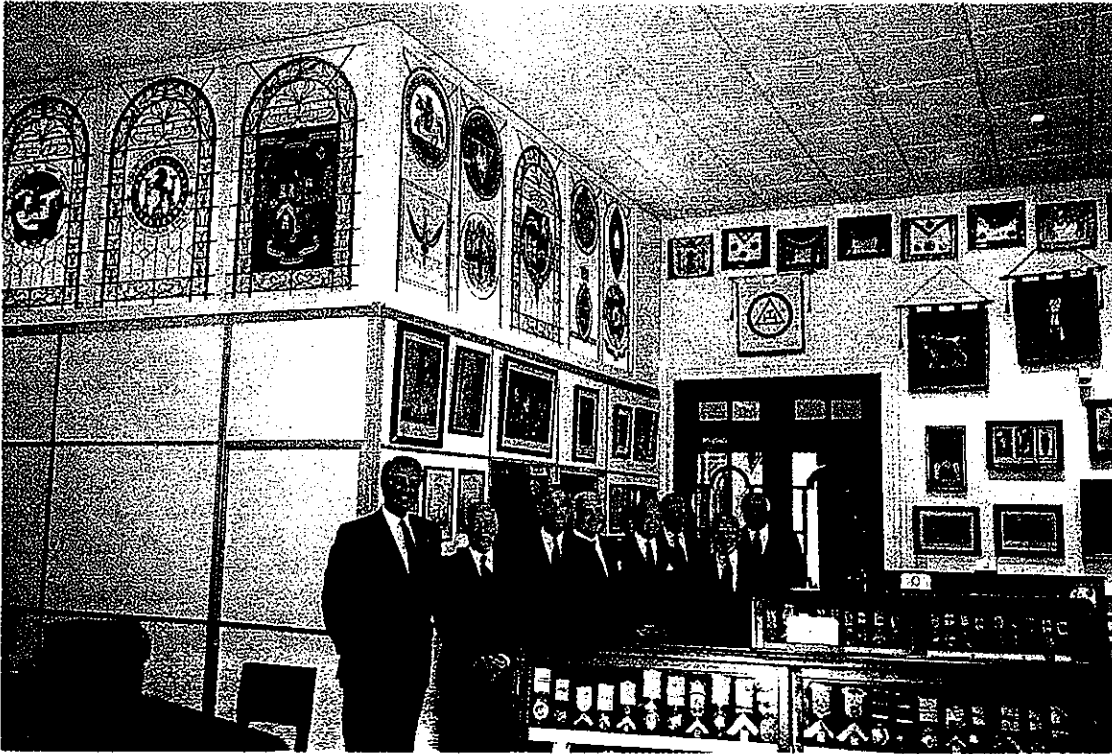


19th May, 1994 - Commissioning of stained glass panels

(Left to right) J. Bonomy, JP, Provincial Grand Master, East Kent; President.  
 R.B. de Gray, Chairman Kent Masonic Library and Museum Trust. S.F.N. Waley, MA,  
 Provincial Grand Master, West Kent; Vice President.



Orders of Freemasonry in Kent: [Extreme left upper] Knights Templar; [lower] Rose Croix; [Mid left upper] Cryptic Degrees; [lower] Red Cross of Constantine; [Centre] Mark and Royal Ark Mariner; [Mid right upper] Allied Degrees; [lower] Order of the Secret Monitor; [Extreme right upper] Knights Templar Priests; [lower] Royal Order of Scotland.



*19th May, 1994 - Commissioning of stained glass panels*

*(left to right)*

*K.J. Breading, Provincial Prior, Knights Templar*

*H.G. Graham, Inspector-General, Rose Croix*

*J.A. Edmondson, Intendant-General, Red Cross of Constantine*

*R.B. de Gray, Provincial Grand Master, Mark and Royal Ark Mariner*

*R.A.J. Williams, Divisional Grand Inspector, Royal and Select Masters, and  
Divisional Grand Prefect, Allied Masonic Degrees*

*Dr R.J. Edney, Grand Superintendent, Knight Templar Priests*

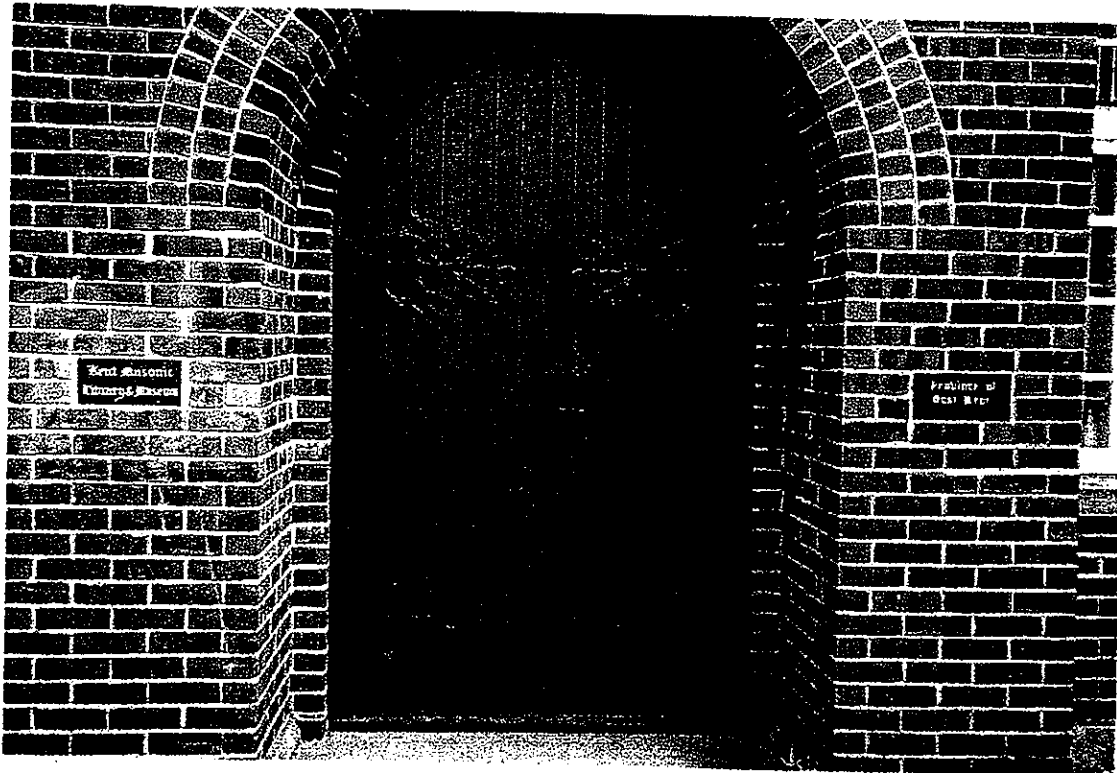
*R.C.C. Frizell, Provincial Grand Supreme Ruler, Order of the Secret Monitor*

*G. Smith, Provincial Grand Master, Royal Order of Scotland*





*October 1993 - Display of Cornwallis memorabilia in the foreground.*



*Entrance (1994)*

Following Registration of the Trust, exemption from the National Non-Domestic Rate for the building was sought and was granted by Canterbury City Council on 6th July, 1993, saving at that time some £2,600 per year. Exemption was granted not only because the Trust was a Registered Charity, but also because it was an educational facility available to the general public at large. This focussed attention on the need to encourage visitors, for which publicity literature was required. A new logo had recently been designed for the Province of East Kent by L.B. Harris of George Hamilton Lodge N° 3452, who was now commissioned to design a suitable 'badge' for the Library and Museum. After some research a design was produced, which was based on the medallion of the Provincial Grand Secretary of Kent in 1785. This was approved and incorporated in the heading of new Library and Museum stationery and also a publicity leaflet giving details of the establishment, its location, times of opening and so on. The leaflet has been widely distributed.

At the first Annual General Meeting of the Trust in 1993, a revised set of By-Laws was approved. These confirmed the composition of the Management Committee and the Finance and General Purpose Sub Committee, detailed the necessary arrangements for the annual accounts and their audit, and for the Annual General Meetings. They also included provision for the appointment of the President, Past Presidents and up to three Vice Presidents. Currently (1994) the holders of these honorary appointments are:-

President: J. Bonomy, OBE, JP, Provincial Grand Master for East Kent

Past President: J.A. Porter, TD, JP, DL, MA, Past Provincial Grand Master for East Kent

Vice Presidents: E.D.Y. Grasby, MD, FRCOG, Past Assistant Provincial Grand Master of Kent and of East Kent

Dr R.J. Edney, MB, BS, Past Deputy Provincial Grand Master of East Kent

S.F.N. Waley, MA, Provincial Grand Master for West Kent

All the main work having been completed and the Library and Museum being once again available to all and sundry, a small gathering was held in the Museum on 21st October, 1993 (see page 11), at which the Provincial Grand Master formally declared it reopened. Subsequently it was agreed that normal opening hours would be 10 am to 12 noon and 2 to 4 pm on Mondays, Wednesdays and Fridays, Bank Holidays excepted and arrangements were made for a staff of volunteers, trained by the Curator, to be in attendance at these times.

Further measures taken to encourage visitors included the erection by Canterbury City Council of an extra arm on their signpost in St. Peter's Street pointing to the Library and Museum; and posting of a complementary notice on the wall of the car park. Finally, a new tablet of black marble inscribed "Kent Masonic Library and Museum" in gold to match the existing tablet for the Provincial Office, was inserted in the brickwork at the entrance to the building (see opposite page).

#### IV Stained Glass Panels

At a meeting of the Finance and General Purpose Sub Committee on 6th July, 1993, the Chairman, also Provincial Grand Master for the Mark and Royal Ark Mariner Degrees in Kent, reported that he had a small framed stained glass panel representing the badge of the Provincial Grand Mark Lodge of Kent, which he suggested might be installed in the Museum, possibly in the entrance doors or otherwise. No decision was taken at the time, but at a later meeting following the design of the logo for the Trust it was agreed that three new panels would be produced depicting the badges of the Province of East Kent, Mark and Royal Ark Mariner, and the Library and Museum Trust; and that these should be installed between the Library roof and the ceiling on the North East side. With the assistance of L.B. Harris, the new panels were designed to match as closely as possible the design of the Grand Lodge windows but to a smaller scale, and a method of artificial rearward illumination was installed.

When this installation was completed it was generally agreed that the new panels would mark completion of the redevelopment of the Library and Museum in a very suitable manner, but the matter did not rest there. News of the project spread and by early 1994 it had been agreed that further similar panels would be provided to fill the North West side of the upper Library wall at right angles to the first site. These would be representative of the badges of the Provincial Grand Lodge of West Kent and eight other Orders of Freemasonry in Kent. The West Kent panel was made the same size as that for East Kent and the others occupied half a panel each. Some rearrangement of the original installation was made and the final layout is shown on page 15. The panels were made by Crown Conservation Systems of Sheerness (proprietor B.D. Schmid, a Past Master of the Isle of Sheppey Lodge N° 6769) from glass donated by G.R.T. Ball of Queenborough Lodge N° 3983 and the electrical installation was carried out by R.G. Philpott, a Past Master of Dane John Lodge N° 8810.

Completion of the project was marked by a unique gathering in the Museum on 19th May, 1994, attended by the Provincial Grand Masters of both East and West Kent, the Chairman of the Library and Museum Trust and the Heads of all the other Orders involved. The cost of the panels was borne by the Trust, but supported by substantial contributions from all concerned.

#### V Conclusion

The redevelopment of the Library and Museum is the sort of operation which is never really finished. The need to make changes, correct faults and improve the display of exhibits and so on still arises and will continue. Nevertheless, this (October 1994) seems a suitable juncture at which to close this attempt to record what has happened in this eventful period in its history. It also marks the most recent change of Secretary. The Appeal for funds having been concluded (although donations continue to be received from a wide variety of sources) and the planned work having been completed at a cost, which has left sufficient funds for investment such that the Library and Museum might expect to be self-supporting for the foreseeable future, it seemed time for a fresh incumbent. David D. Wells, a Past Master of Wellington Lodge N° 784 and a Past Provincial Senior Grand Warden was appointed at the Annual General Meeting on 17th September, 1994.

In the meantime the matter of investment had been considered and it was decided early in 1994 to place capital in excess of current needs with the new East Kent Provincial Charities Association, which was a Registered Charity and in a position to provide interest at a rate exceeding that which the Trust could obtain elsewhere. By September 1994 the amount so deposited had reached £40,000 and the position was such that this did not need to be touched at least until the end of the financial year on 31st March, 1995. It was to be hoped that future interest would suffice for all normal purposes.

#### *APOLOGIA*

Unfortunately the idea of producing this small treatise did not arise until recently and, with hindsight, I should have done much more in the early stages to record on film and otherwise how matters stood especially before improvements began. Hopefully, however, a useful record has been made and I intend that the original will be lodged in the Library as a permanent record.

P.F.W. Gahan  
October, 1994

Extract from the Freemasons' Manual for Kent 1923

PROVINCIAL GRAND LODGE OF KENT

Library and Museum

President: The Provincial Grand Master, R.W. Bro Col. F.S.W. CORNWALLIS,  
C.B.E., D.L., J.P., P.G.W., Eng.

Vice President: The Deputy Provincial Grand Master, W. Bro. JOHN WHITE,  
P.G.D., Eng.

Joint Librarians:

W. Bro. E.F. SALL, P.M. 31.

W. Bro. W.H. HAMILTON, P.M. 1449.

Treas: W. Bro. H. BIGGLESTON, P.G.D., Kent.

Secretary: W. Bro. H.G. PAGE, P.M. 31.

The above Library and Museum is now established at the Masonic Temple, Canterbury, and some 300 books and other exhibits of Masonic interest are available.

Access may be obtained on Mondays, Thursdays and Saturdays from 2 to 5 p.m., and at other times by appointment with the Resident Custodian, Masonic Temple, Canterbury.

Books, of which duplicates exist in the Library, may be borrowed by subscribing members of the Province on guarantee of safe custody and return.

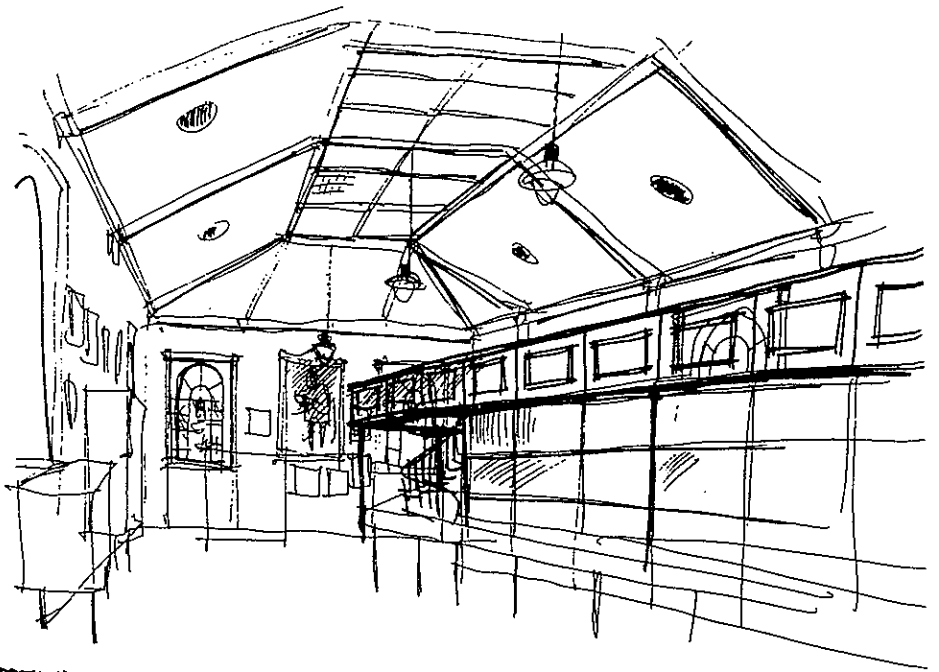
Further contributions of masonic books, curios, etc., either as gifts or on loan, are invited.

Annual Subscriptions of One Guinea from each Lodge and Chapter in the Province became due from the First of January in each year.

Appendix 2

Proposed extension  
September, 1989

Looking  
North



ADDITIONAL DISPLAY AREA, MASONIC LIBRARY & MUSEUM,  
CANTERBURY, KENT - PROVINCE OF EAST KENT



Looking  
South

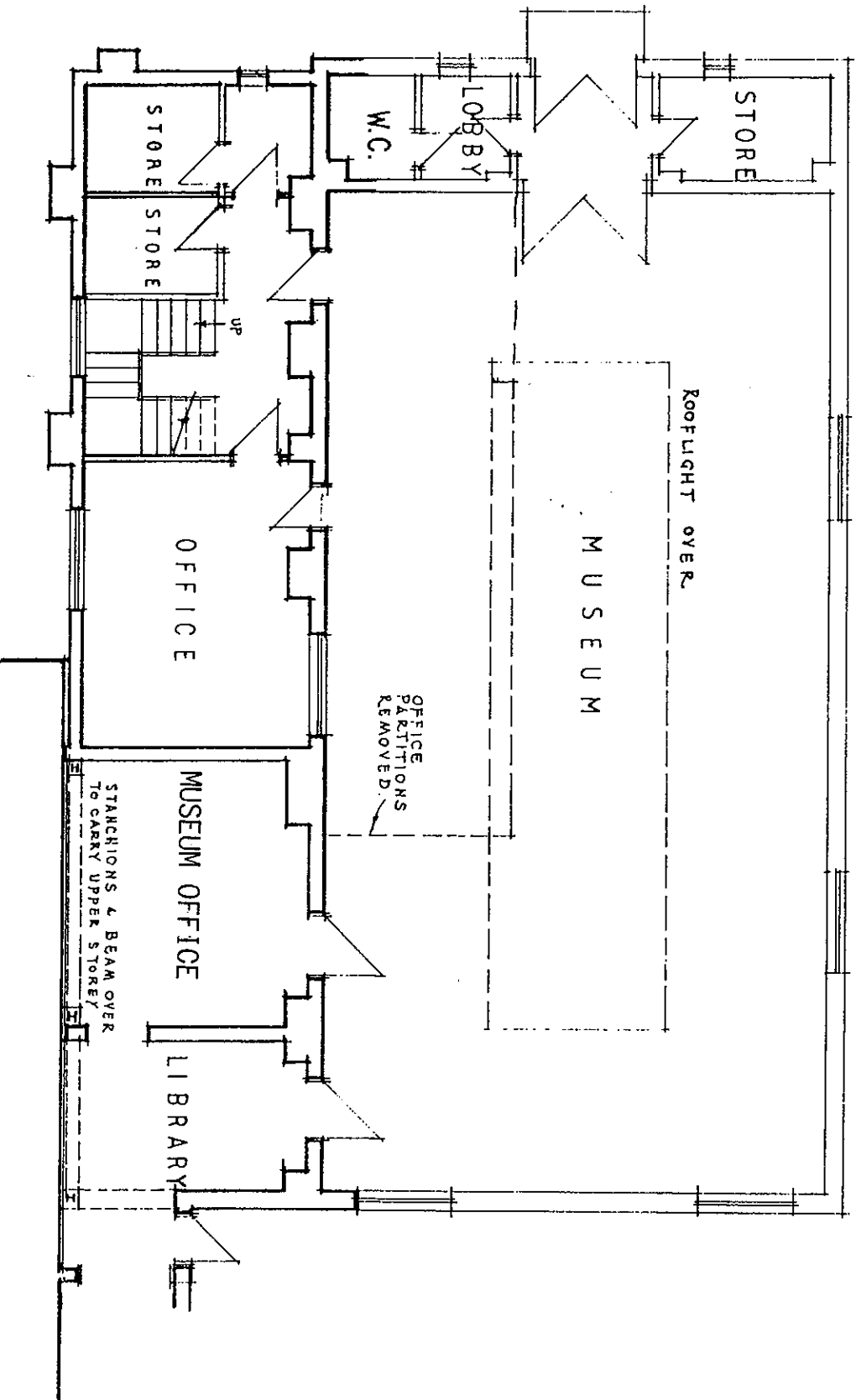
ADDITIONAL DISPLAY AREA, MASONIC LIBRARY & MUSEUM,  
CANTERBURY - PROVINCE OF EAST KENT.

North East  
Corner



ADDITIONAL DISPLAY AREA, MASONIC LIBRARY & MUSEUM,  
CANTERBURY, KENT - PROVINCE OF EAST KENT

KENT MASONIC LIBRARY AND MUSEUM, CANTERBURY  
Proposed external extension, 1991



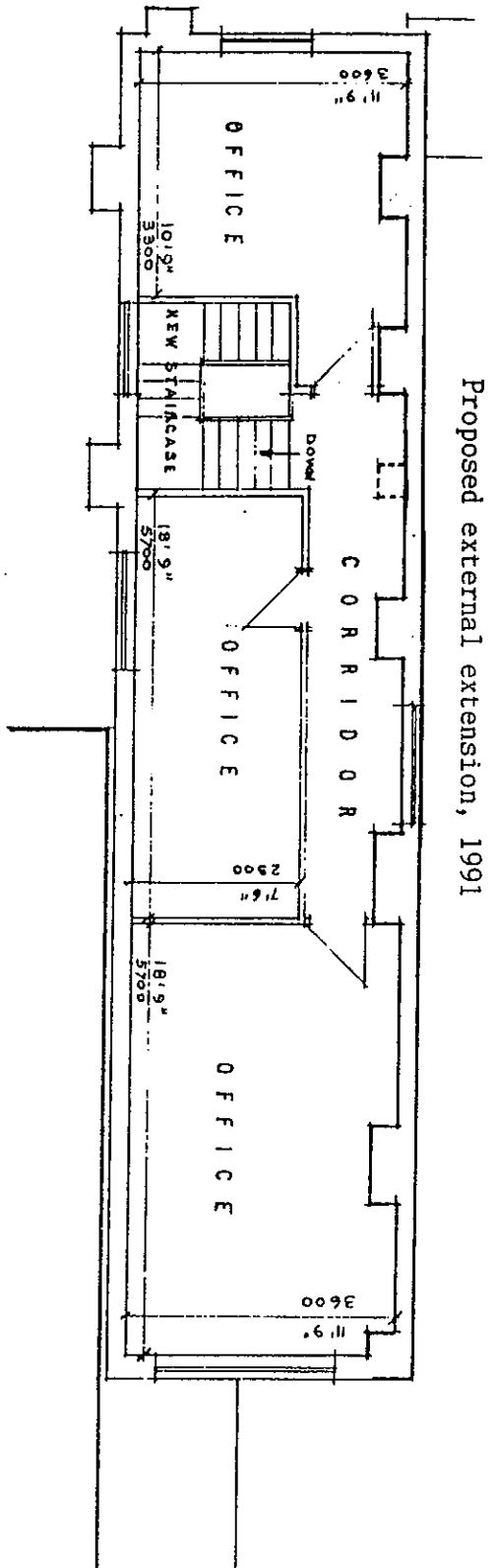
GROUND FLOOR PLAN

SCALE 1:100

Fig 1

KENT MASONIC LIBRARY AND MUSEUM, CANTERBURY

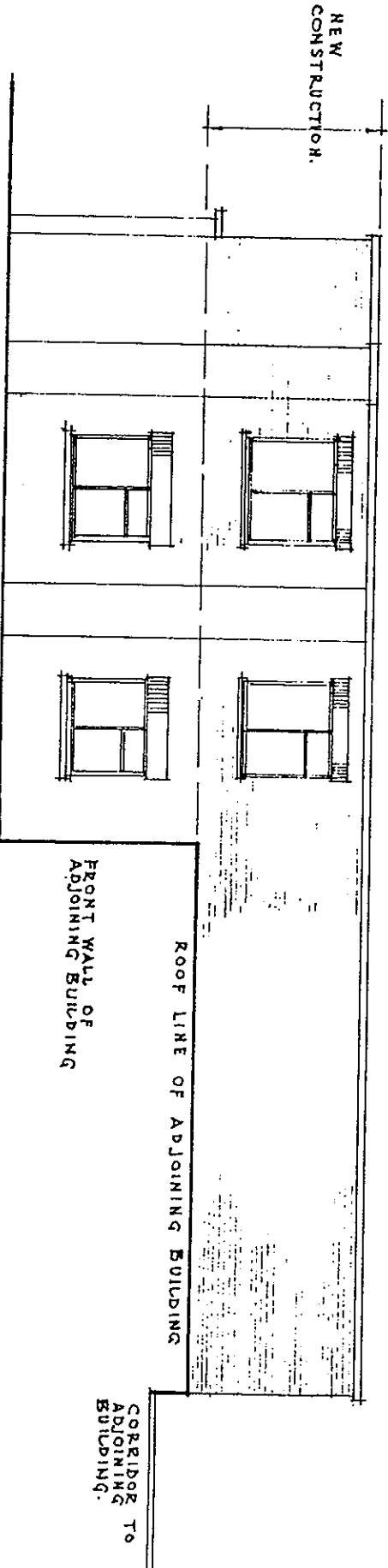
Proposed external extension, 1991



PROPOSED FIRST FLOOR PLAN

Fig 2

SCALE 1:100



PROPOSED SIDE ELEVATION

Fig 3

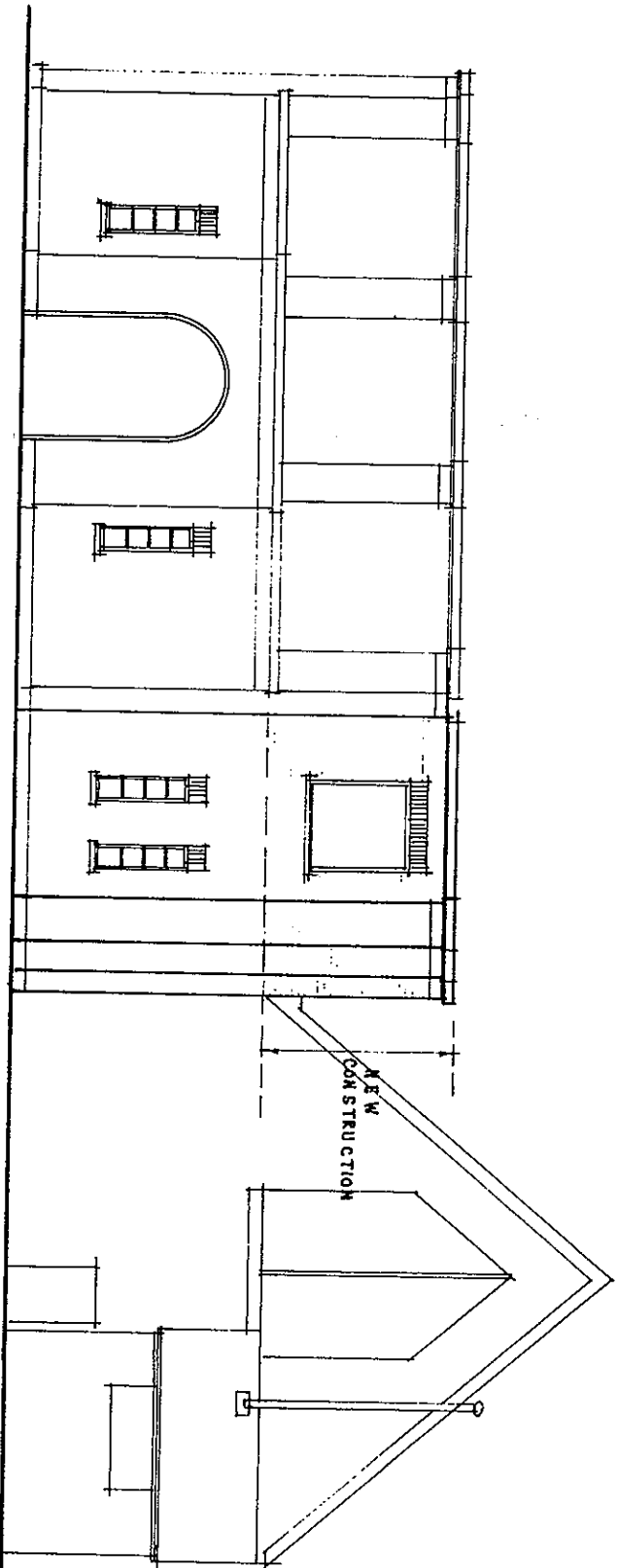
SCALE 1:100



Appendix 3

KENT MASONIC LIBRARY AND MUSEUM, CANTERBURY

Proposed external extension, 1991



PROPOSED FRONT ELEVATION

SCALE 1:100

Fig 4